

# Grand Bundle PDF Course 2021

## Exams Covered:

**SBI Clerk | SBI PO | IBPS RRB PO |  
IBPS RRB Clerk | IBPS PO | IBPS Clerk**

### Seperate PDF Course for All Major Bank pre + Mains Exams

- Total No. of Ques: 40,000+
- Question in Bilingual (Eng & Hindi)
- Answers With Detailed Video Solution
- Provides you 50 days Study Planner for each exams
- Covers All Types of Questions in Each Topic
- Questions in Exact Exam Level
- All Our PDFs are Downloadable
- 100% Satisfaction Assured & It's Worthy for your money
- Download as PDF & also take Quiz with Timer



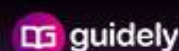
**Grab It Now**

## Yearly Platinum Package

All Bank + Insurance + Railway + SSC Exams

**1 Year Validity**

- ✓ 3000+ Mock Test Series
- ✓ Full-Test, Sectional tests, Topic Tests, eBooks
- ✓ Best Quality Questions Based on Real Exams
- ✓ 24\*7 Access on Website and Mobile app



**Enroll now**

### QUANTITATIVE APTITUDE

Directions (1-5): Following questions contain two equations. You have to solve both the equations and determine the relationship between them.

1)

$$2x^2 + 9x - 5 = 0$$

$$y^2 + 2y - 24 = 0$$

A. If  $x < y$

B. If  $x > y$

C. If  $x \leq y$

D. If  $x \geq y$

E. If relationship between  $x$  and  $y$  cannot be determined.

2)

$$7x^2 - 11x - 18 = 0$$

$$y^2 - 45y + 506 = 0$$

A. If  $x < y$

B. If  $x > y$

C. If  $x \leq y$

D. If  $x \geq y$

E. If relationship between  $x$  and  $y$  cannot be determined.

3)

$$8x^2 + 18x + 9 = 0$$

$$6y^2 - 11y + 4 = 0$$

Directions (6-10): Study the following information carefully and answer the questions given below.

A. If  $x < y$

B. If  $x > y$

C. If  $x \leq y$

D. If  $x \geq y$

E. If the relationship between  $x$  and  $y$  cannot be determined.

4)

$$x^3 = 85184$$

$$y^2 = 1936$$

A. If  $x < y$

B. If  $x > y$

C. If  $x \leq y$

D. If  $x \geq y$

E. If the relationship between  $x$  and  $y$  cannot be determined.

5)

$$x^2 - 29x + 204 = 0$$

$$y^2 + 4y - 221 = 0$$

A. If  $x < y$

B. If  $x > y$

C. If  $x \leq y$

D. If  $x \geq y$

E. If the relationship between  $x$  and  $y$  cannot be determined.

## IDBI Executive Previous Year Paper – English Version

Boxes	Total number of fruits (apple and Orange)	Percentage of damaged fruits	Percentage of good apple out of the total good fruits in the box	Ratio of the good Orange : damaged Orange
<b>A</b>	4000	40%	75%	3:5
<b>B</b>	3600	33(1/3)%	50%	3:1
<b>C</b>	4400	25%	40%	33:10
<b>D</b>	4800	37.5%	40%	2:1
<b>E</b>	5000	20%	40%	4:1

6) What is the average number of damaged apples in all the boxes together?

- A.560
- B.580
- C.640
- D.620
- E.None of these

7) What is the ratio of the number of good oranges in box D to the number of damaged apples in box B?

- A.6:5
- B.7:3
- C.9:4
- D.10:7
- E.None of these

8) What is the difference between the average number of good oranges from all the boxes together and the average number of damaged fruits in all the boxes together?

- A.189
- B.234
- C.248
- D.256
- E.None of these

9) The number of good fruits in box D is approximately what percent of the total number of fruits from B?

- A.44.44%
- B.72.51%
- C.83.33%
- D.64.72%
- E.None of these

10) What is the ratio of the good fruits from B to the number of good apples from C?

- A.19:14
- B.20:11
- C.21:10
- D.22:9
- E.None of these

11) A certain sum 'P' is invested in scheme A and it becomes 108.16% after 2 years at a 'r'% rate of interest compounded annually. Another sum of Rs. (P + 1000) is invested in scheme B for 2 years at a '2.5r'% rate of interest compounded annually, and interest received from scheme B is Rs.735. Find the interest received from scheme A.

- A.Rs.212
- B.Rs.215

## IDBI Executive Previous Year Paper – English Version

C.Rs.206

D.Rs.209

E.Rs.204

12) A and B together can complete  $33\frac{1}{3}\%$  of the work in 10 days, C and D together can complete 85% of the work in 17 days and A, B and C together can complete half of the work in 7.5 days. A and D together can complete  $66\frac{2}{3}\%$  of the work in 16 days. In how many days does B alone completes 40% of the work?

A.32 days

B.36 days

C.45 days

D.48 days

E.None of these

13) A basket contains x black, 4 red and 5 green colour balls. One ball is taken randomly and the probability of getting a green colour ball is  $\frac{1}{3}$ , and then find the number of balls in the basket.

A.12

B.14

C.15

D.18

E.20

14) Ramesh, Nimo and Bina entered into a partnership with investment in the ratio 5:8:3 respectively. After one year, Bina doubled his investment and Nimo made his investment 1.5 times. After one more year, Ramesh doubled his investment. At the end of three years, they earned a total profit of Rs.134000. Find the share of Nimo in the profit.

A.Rs.60000

B.Rs.52000

C.Rs.64000

D.Rs.48000

E.None of these

**Directions (15-19):** Study the following information carefully to answer the questions given below:

In the recently held commonwealth games, a total number of 1500 players participated in five different games like athletics, hockey, lawn tennis, rugby and badminton. 30% of the total players participated in badminton.  $\frac{1}{5}$  of the total players participated in hockey. 17% of the total players participated in lawn tennis, and 15% of the total players participated in athletics. The remaining players participated in rugby. Two-fifth of the hockey players are females. Total number of rugby players is equal to the number of male players in badminton. The ratio of male to female players in lawn tennis is 11:6. There are 170 female athletes. The number of female athletes is equal to the number of male rugby players.

15) The number of female players who participated in badminton is approximately what percent of the total number of players who participated in rugby?

A.46.67%

B.63.67%

C.34.67%

D.57.67%

E.66.67%

16) What is the difference between the sum of male players who participated in both hockey and rugby and the sum of female players who participated in both lawn tennis and badminton?

A.50

B.80

C.40

D.20

E.70



## IDBI Executive Previous Year Paper – English Version

17) What is the ratio of the total number of male players participating in badminton to the total number of female players participating in hockey?

- A.4:7
- B.9: 4
- C.3:7
- D.7:9
- E.4:1

18) If there is an increase of 10% in the total number of female players participating in hockey and badminton then what is the total number of female players who participated in the tournament?

- A.350

B.240

C.690

D.235

E.345

19) If due to certain reason athletics was dropped and all the athletics left the tournament then what was the percentage of male players among the total players remaining in the tournament?

A.62 (29/51) %

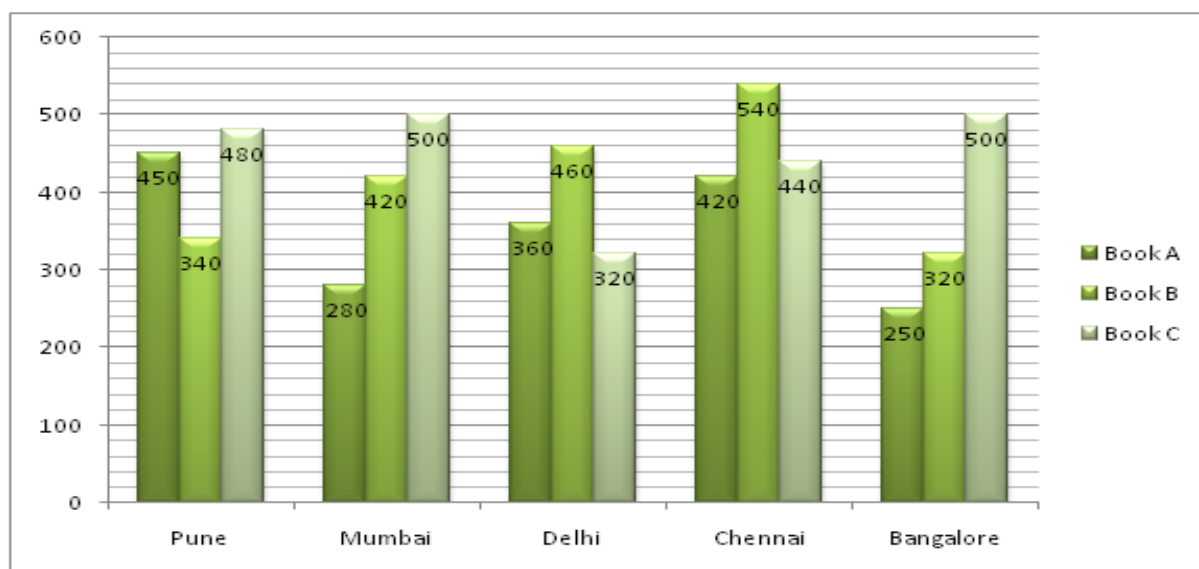
B.61 (29/51) %

C.65 (29/51) %

D.63 (29/51) %

E.24 (29/51) %

Directions (20-24): The following line graph shows the number of three books sold in five cities.



20) Number of Book A sold in Pune is what percent of the number of Book C sold in Mumbai?

- A.85%
- B.75%
- C.90%
- D.80%
- E.None of these

21) Find the respective ratio of the number of Book B sold in Mumbai and the number of Book A sold in Delhi.

- A.5:4
- B.6:5
- C.7:6

## IDBI Executive Previous Year Paper – English Version

D.4:3

E.None of these

22) Find the total number of all books sold in Chennai.

A.1160

B.1350

C.1400

D.1200

E.None of these

23) Find the difference between the number of Book B sold in Delhi and the number of Book C sold in Pune.

A.50

B.60

C.40

D.20

E.None of these

24) Number of Book C sold in Bangalore is what percent more than the number of Book A sold in the same city?

A.200%

B.100%

C.250%

D.300%

E.None of these

Directions (25-31): What approximate value should come in place of (?) in the following questions.

25)  $\sqrt{287} \times 14 \div 6.92 = ?^2 + (8.13)^{1/3} + 27.89 \div 4$

A.9

B.7

C.5

D.11

E.13

26)  $13 \frac{4}{5} + 8 \frac{1}{10} - 11 \frac{2}{5} + 16 \frac{3}{10} = ? - 3 \frac{4}{5}$

A.31

B.42

C.26

D.53

E.18

27) 42 % of 1249 – 16 % of 1099 = ? % of 499

A.50

B.90

C.70

D.105

E.135

28)  $279.908 + 1499.897 \div 29.912 \times 11.11 = ? + 82.210 \times 3.908$

A.502

B.506

C.512

D.510

E.489

29) 69.904 % of 129.998 + 19.879 \* 4.102 - 25.021 % of 443.934 = ?

A.40

B.48

C.56

D.60

E.68

30)  $224.912 \% \text{ of } 39.908 + ? \times 12.193 = 1794.173 \div 22.914$

A.-1

B.-3

C.-5

D.-6

## IDBI Executive Previous Year Paper – English Version

E.-9

31)  $840.98 \div 28.99 + ? = 112.08$

- A.73
- B.83
- C.53
- D.63
- E.43

Directions (32 - 36): What will come in place of question mark (?) in the following number series.

32) 9, ?, 297, 1485, 6682.5, 26730

- A.54
- B.60
- C.52
- D.63
- E.56

33) 19, 29, 40, 44, 52, 59, ?

- A.66
- B.73
- C.76
- D.58
- E.99

34) 7, 14, 42, 210, 1470, ?

- A.16170
- B.17190
- C.19170
- D.18160
- E.15190

35) 23, 29, 47, 75, 110, ?

- A.120
- B.145
- C.130
- D.148

E.110

36) 469, 403, 353, 317, 293, ?

- A.223
- B.300
- C.279
- D.303
- E.None of these

37) The ratio of the speed of upstream to downstream is 1:3 and the boat travels 40km in 2 hours in still water. What is the speed of the stream?

- A.5 kmph
- B.4 kmph
- C.8 kmph
- D.10 kmph
- E.None of these

38) The shopkeeper sold two mobiles for Rs.6000 each. If one of the mobile sold at 20% profit and another one is 20% loss, then what is the profit or loss for the whole transaction?

- A.No loss no profit
- B.Rs.400 profit
- C.Rs.600 loss
- D.Rs.500 loss
- E.Rs.600 profit

39) Rajesh deposited a certain amount to a bank at a simple interest rate of 10% per annum in the first year and it increased by 2% per annum every year. If he got Rs.9000 as interest at the end of three years, what is the deposited amount?

- A.Rs.20000
- B.Rs.25000
- C.Rs.28000
- D.Rs.18000

**IDBI Executive Previous Year Paper – English Version**

E.None of these

40) If the numerator of a fraction is increased by 350% and the denominator of the fraction is increased by 150%, the resultant fraction becomes  $\frac{27}{50}$ . Then find the original fraction.

A. $\frac{13}{15}$

B. $\frac{11}{17}$

C. $\frac{11}{13}$

D. $\frac{3}{10}$

E.None of these

41) L, M and N invested in a joint venture in the ratio of 14: 10: 13 and the time period of their investment are in the ratio 5:4:6 respectively. If the total profit is Rs.94000 then how much profit share of L and M

together is more or less than the profit share of M and N together.

A.Rs.3000 more

B.Rs.4000 less

C.Rs.2000 more

D.Rs.1000 less

E.Equal profit

42) Find the average increase rate (per annum)if the population in the first year is increased by 30%, second year is increased by 10% and that in the third year is decreased by 10%.

A.8.64

B.9

C.9.57

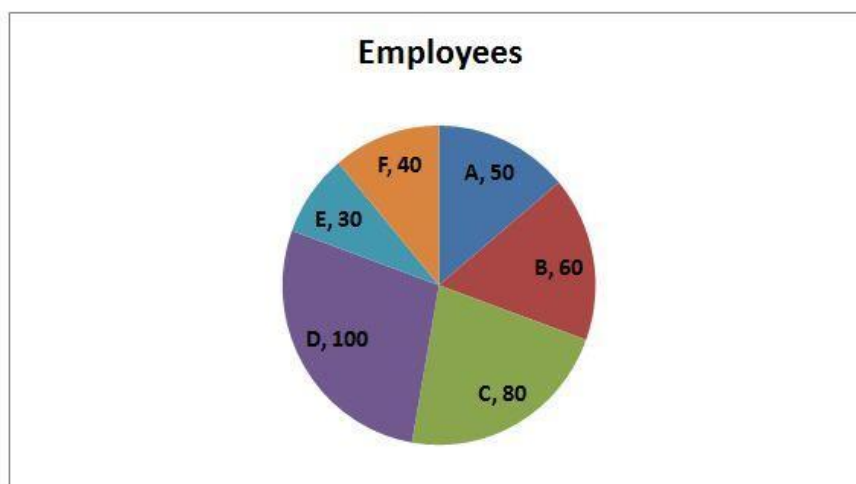
D.9.52

E.8.5

**Directions (43-47):** Study the following information carefully and answer the questions given below.

Pie chart shows the total number of employees in different companies and male employees of different companies in degree.

Total employees = 3600

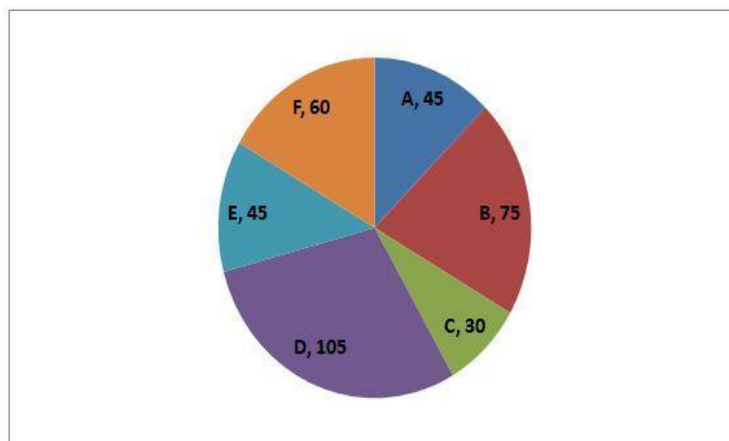


Total male employees = 2400

Values are in degree



**IDBI Executive Previous Year Paper – English Version**



43) What is the difference between the female employees of A and female employees of C?

- A.400
- B.600
- C.200
- D.800
- E.None of these

44) What is the ratio of male employees of B and C together to the female employees of D and E together?

- A.3:5
- B.7:3
- C.7:5
- D.3:7
- E.None of these

45) What is the total number of females in B, C and D together?

- A.1200
- B.1300
- C.1000
- D.900
- E.None of these

46) Female employees from C are how much percentage more than the female employees from D and E together?

- A.100%
- B.200%
- C.50%

- D.300%
- E.None of these

47) Female employees from D are what percentage of male employees from F and C together?

- A.150%
- B.100%
- C.50%
- D.200%
- E.None of these

Directions (48-50): Find the wrong term in the following number series

48) 1, 13, 36, 85, 181, 373, 757

- A.36
- B.373
- C.757
- D.85
- E.None of these

49) 9216, 2304, 576, 144, 36, 12

- A.576
- B.12
- C.9216
- D.144
- E.None of these

50) 11, 22, 66, 130, 396, 792, 2376

- A.396

**IDBI Executive Previous Year Paper – English Version**

- B.130  
C.2376  
D.792  
E.None of these

**ENGLISH LANGUAGE**

**Directions (51-55):** In each of the questions given below a sentence is given which is divided into four parts. Out of the given 4 parts, one is grammatically correct and the rest are not. It is then followed by options which carry the correct part. If all the parts are grammatically correct choose option (e).

**51)** Given the near-term inflation trajectory and lower a)/ probability of negative shocks amid moderated global growth b)/, a rate cuts now could spur growth and address c)/the issue of higher real interest rate hampering investment activity d)/

- A. c  
B. a  
C. d  
D. b  
E. No error

**52)** What drove valuations were the narrative around a)/improving macro stability and reforms agenda, b)/which helped improve investors confidence on c)/India's long-term growth potential, saying analysts at UBS d)/

- A. b  
B. c  
C. d  
D. a  
E. No error

**53)** While global slowdown worries cause some a)/ panic, the disconnect between the narrative and ground b)/realities as well as the large gap among c)/earnings and valuations, were to large to ignore d)/

- A. c  
B. a  
C. d  
D. b  
E. No error

**54)** Monday inflation numbers also point to a)/weaker economic growth and the markets b)/was quick to react, with most indices across Asia c)/heading low, showing up the fragility in investor sentiment d)/

- A. b  
B. c  
C. d  
D. e  
E. No error

**55)** According to the Organization for Economic Cooperation and a)/Development, growth is cooling in the world's major economies b)/, particularly in Germany and now China, suggesting that c)/momentum this year could be even slower than what has been predicted d)/

- A. c  
B. d  
C. a  
D. b  
E. No error

**Directions (56-60):** In each of the following sentences four words are given in bold. These words may or may not replace each other to form a contextually and grammatically meaningful sentence.

**IDBI Executive Previous Year Paper – English Version**

Below each sentence four options are given for the replacements. You have to choose the correct replacement as your answer. If no replacement is required, choose no change required

56) The consumer demand for a **wide a)** variety of **heavy b)** and light products has slumped is **assorted c)** from sagging sales being suffered by companies operating in **clear d)** markets.

- A. a-b
- B. b-c
- C. c-d
- D. b-d
- E. No change required

57) Recent **revelations a)** of gaps in the MCA-21 **problem b)**, maintained by the ministry of corporate affairs and used by the Central Statistics Office for its official GDP **computation c)**, has added to the **database d)** of Indian data reliability.

- A. b-c
- B. a-d
- C. b-d
- D. c-d
- E. No change required

58) With no **belief a)** that religious **evidence b)** in itself causes **violence c)**, the murderous acts of a few self-avowed believers say nothing at all about the broader belief system they swear **allegiance d)** to.

- A. a-d
- B. c-d
- C. b-d
- D. a-b
- E. No change required

59) The aid comes when economic growth is **shrunk a)** to hit the lowest, the public exchequer's finances have **dwindled b)** and the country's foreign exchange reserves have **expected c)** to levels barely enough to **cover d)** two months' imports.

- A. a-c
- B. b-d
- C. c-d
- D. b-c
- E. No change required

60) Populism can be costly, and the country has rarely **reined a)** good fiscal control but unless state revenues are **raised b)** and expenditure **shown c)** in, it cannot **expect d)** the base conditions of low inflation and cheap capital.

- A. b-c
- B. a-c
- C. a-d
- D. a-b
- E. No change required

**Directions (61-68): Read the given passage carefully and answer the questions that follow.**

Call it a blessing or a curse of Mother Nature, we have to breathe in over 10,000 litres of air in a day (more than four million litres in a year) to remain alive. By making it essential for life, God has wished that we try to keep the air we breathe clean. Everyone can see the food that is not clean and perhaps **refrain** from eating it, but one cannot stop breathing even if one can feel the air to be polluted. Several harmful and noxious substances can contaminate the air we breathe. Generally, much is said and written about outdoor air pollution, most of which is due to vehicular and industrial exhausts.

## IDBI Executive Previous Year Paper – English Version

Given the fact that most of us spend over 90% of our time indoors, it is most important to recognize that the air we breathe in at home or in offices can be polluted. It can be a cause of ill-health. Air pollutants that are generally present in very low concentrations can assume significance

in closed ill-ventilated places. The indoor air pollution can lead to allergic reactions and cause **irritation** to the skin, the eyes and the nose. But as is logical to assume, the brunt of insult by pollutants is borne by the lungs. It can lead to the development of fresh breathing problems.

There can be several sources of indoor air pollution. Tobacco smoke is one of the most important air pollutants in closed places. "Passive smoking" or environmental tobacco smoke (ETS) pollution can lead to all the harmful effects of tobacco smoking seen in the smokers in their non-smoking companions. One can occasionally see signs displaying the all-important message: "Your smoking is injurious to my health" in offices and homes. The children of smoking parents are among the worst affected persons. The **exposure** of young children to ETS leads to increased respiratory problems and hospital admissions as compared to non-exposed children.

Humidifiers in the air-conditioning plants provide an ideal environment for certain types of bacteria and have led to major outbreaks of pneumonia. It is important to clean regularly the coolers, air-conditioners and damp areas of the house such as cupboards, lofts, etc to minimize this risk.

Toxic gases can also pollute the indoor environment. Biomass fuels (wood, cowdung, dried plants) and coal, if burned inside, can lead to severe contamination by carbon monoxide (CO): The poor quality of stoves and other cooking or heating

appliances that cause incomplete combustion of LPG can also lead to the emission of CO or nitrogen dioxide.

The gases are very toxic in high concentrations as may be encountered during industrial accidents, but even in very minimal amounts, as may be **prevalent** in homes and offices, they can cause irritation to the skin or the eyes, rashes, headache, dizziness and nausea. Improving the ventilation is an important preventive measure, besides trying to eliminate the source that may not be always feasible.

Other indoor pollutants are toxic chemicals like cleansing agents, pesticides, paints, solvents and inferior-quality personal-care products, especially aerosols. Very old crumbling pipes, boilers, insulation or false roofing can also be important sources. Asbestos is a hazardous product that can cause cancer in humans.

### 61) Give a suitable title to the passage

- A. Pollution
- B. Air Pollution
- C. Earth is in Danger
- D. Breathing Poison: Indoor Pollutants
- E. None of these

### 62) Which of the following statements is/are true according to the passage?

- A. Air pollutants that are generally present in very low concentrations can assume significance in closed ill-ventilated places.
- B. The indoor air pollution can lead to allergic reactions and cause irritation to the skin, the eyes and the nose.
- C. Inhaling of indoor pollutants can lead to the development of fresh breathing problems.

**IDBI Executive Previous Year Paper – English Version**

- D. All of the above
- E. None of these

**63) According to the passage which of the following statements is/are false?**

- A. Tobacco smoke is one of the most important air pollutants in closed places.
- B. The children of smoking parents are among the least affected persons.
- C. The exposure of young children to ETS leads to increased respiratory problems.
- D. All are false
- E. All are true

**64) According to the passage which of the following is/are indoor pollutant?**

- A. cleansing agents and pesticides
- B. paints
- C. Aerosol
- D. All the above
- E. None of these

**65) Which of the following is the synonym of refrain?**

- A. assist
- B. desist
- C. allow
- D. aid
- E. None of the above

**66) Which of the following is the synonym of irritation?**

- A. exclaim
- B. glad
- C. vexation
- D. jovial
- E. None of the above

**67) Which of the following is the opposite of exposure?**

- A. conceal
- B. vulnerable
- C. reveal
- D. disclose
- E. None of the above

**68) Which of the following is the opposite of prevalent?**

- A. common
- B. Exceptional
- C. universal
- D. extensive
- E. None of the above

**Directions (69-72):** In the given sentence, a blank is given. From the given four options, choose the one that provides the correct word to be filled in the blank, thereby making the sentence grammatically and contextually correct

**69) One dystopian scenario is that power becomes more concentrated, as a few big banks learn to exploit data as \_\_\_\_\_ as social-media firms do and is able to use proprietary economic data to squeeze rivals.**

- A. Winsomely
- B. Amiably
- C. Ruthlessly
- D. Finely
- E. Politely

**70) Banks could lose depositors to untested neo banks, creating a mismatch between their assets and liabilities that could lead to a credit \_\_\_\_\_.**

- A. Repletion
- B. Crunch



**IDBI Executive Previous Year Paper – English Version**

- C. Repose
- D. Amenity
- E. Alleviation

71) To tap the benefits of technology safely, governments should give consumers control over their data, protecting privacy and preventing firms \_\_\_\_\_ information and governments should keep the system's safety buffers at today's overall size

- A. Deranging
- B. Showering
- C. Littering
- D. Hoarding
- E. Sundering

72) The government is set to provide relief to thousands of homebuyers and bankrupt builders awaiting rescue by preparing a clarification on passing bankruptcy resolutions that are \_\_\_\_\_ because many homebuyers did not vote.

- A. Hastened
- B. Stalled
- C. Revved
- D. Relieved
- E. Stumped

**Directions (73-79):** In the passage given below there are 7 blanks. Every blank has four alternative words given in options (A), (B), (C) and (D). You have to tell which word is APPROPRIATE according to the context. If none of the options fit then mark your answer as "E".

The Union Health Ministry has \_\_\_\_\_ (73) new sets of health warnings, including \_\_\_\_\_ (74) pictorial images and text messages, covering 85% of the packet area and a national toll-free number printed

on them to assist the users to quit. The new \_\_\_\_\_ (75) will come into effect on September 1, a statement by the ministry said on Wednesday. The Health Ministry has notified the new warnings by making a/an \_\_\_\_\_ (76) in the Cigarettes and other Tobacco Products (Packaging and Labeling) Rules, 2008. The text messages that will be printed on the packs are "tobacco causes painful death". The \_\_\_\_\_ (77) number - 1800-11-2356 - will also be printed on the packs. This helps in creating awareness among tobacco users, and gives them access to counselling services to effect behaviour change. There shall be one common specified health warning for both smoking and smokeless forms of tobacco products, the statement stated. As per the rules laid down under the Cigarettes and Other Tobacco Products Act (COTPA), during the rotation period of 24 months, two images of specified health warnings as notified in the Schedule shall be displayed on all tobacco product packages and each of the images shall appear consecutively on the package with an interregnum period of 12 months, a notification issued earlier read. The government had introduced a "quitline number" looking at the results of Global Adult Tobacco Survey (GATS) report of 2017, which \_\_\_\_\_ (78) that 62 per cent of cigarette smokers, 54 per cent of bidi smokers and 46 per cent of smokeless tobacco users thought of quitting because of pictorial \_\_\_\_\_ (79) labels on tobacco products.

73) Which of the following words would fit in ---73---

- A. Issued
- B. Bring in
- C. Circulated
- D. Notified
- E. None of the above.

**IDBI Executive Previous Year Paper – English Version**

**74) Which of the following words would fit in ---74---?**

- A. Hazardous
- B. Enlarged
- C. Awful
- D. Noticeable
- E. None of the above.

**75) Which of the following words would fit in ---75---?**

- A. Warnings
- B. Amendments
- C. Instructions
- D. Implements
- E. None of the above.

**76) Which of the following words would fit in ---76---?**

- A. Bill
- B. Resolution
- C. Amendment
- D. Conclusion
- E. None of the above.

**77) Which of the following words would fit in ---77---?**

- A. Toll
- B. Quitline
- C. Query
- D. Public
- E. None of the above.

**78) Which of the following words would fit in ---78---?**

- A. Indicated
- B. Implicates
- C. Says
- D. Inculcates
- E. None of the above.

**79) Which of the following words would fit in ---79---?**

- A. Representation
- B. Knowledge
- C. Suggestions
- D. Warning
- E. None of the above.

**Directions (80-81):** In the Questions given below, there are two statements; each statement consists of a blank. You have to choose the option which provides the correct word that fits in the blanks of both the statements appropriately making them meaningful and grammatically correct.

**80)**

i) Once the \_\_\_\_\_ politician was finally caught in the scandalous affair he was having, he was dismissed from office

ii) Some employee's greedy behaviour leads to a \_\_\_\_\_ action of embezzling money from the company they work for

- A. Benevolent
- B. Decadent
- C. Chaste
- D. Legit
- E. Principled

**81)**

i) The collapse of the company was described as the greatest financial \_\_\_\_\_ in US history.

ii) The candidate's behaviour while campaigning turned what could have been a victory into a political \_\_\_\_\_

- A. Debacle
- B. Feat
- C. Deed
- D. Triumph
- E. Acquisition

**IDBI Executive Previous Year Paper – English Version**

**Directions (82-86): Rearrange the sentences into a coherent and meaningful paragraph and answer the questions that follow:**

**A)** And everywhere, people tune into election-night coverage. In 2016, more than 71 million Americans watched the returns come in real time, about twice as many as watched the ball drop in Times Square.

**B)** This year the entertainment factor will be compromised. The munching of red, white and blue tortilla chips is still permitted, but this is no time to be crowding into bars and parties.

**C)** That would be a pity — but there'd be no need to call it a crisis. Even if one candidate handily wins the popular vote and the Electoral College, it could take days or weeks to know it. Take Pennsylvania, which went narrowly for Trump in 2016.

**D)** And there's another potential downer: Delays in counting the votes could mean the evening ends in frustration for both sides.

**E)** Some 2.4 million voters there have already cast ballots, thanks to this year's unprecedented expansion of voting by mail. According to state law, none can be processed before Tuesday, when officials will be busy running in-person operations.

**F)** In recent years, Election Night in America has become a lot like New Year's Eve. Bars, restaurants and hotel ballrooms fill up with revellers; colleges host watch parties; kids beg their parents to stay up late.

**82) Which of the following will be the last sentence after rearrangement?**

- A. D
- B. A
- C. F
- D. E
- E. None of these

**83) Which of the following pair forms two consecutive statements after rearrangement?**

- A. A-D
- B. B-C
- C. A-E
- D. C-D
- E. None of these

**84) Which of the following will be the First sentence after rearrangement?**

- A. D
- B. A
- C. F
- D. E
- E. None of these

**85) Which of the following will be the Second sentence after rearrangement?**

- A. D
- B. A
- C. F
- D. E
- E. None of these

**86) Which of the following will be the Penultimate sentence after rearrangement?**

- A. D
- B. C
- C. F
- D. E
- E. None of these

**Directions (87-91): The sentences given below may need modifications. Find the error in the sentences and choose the options that best replace the phrases in bold.**

**IDBI Executive Previous Year Paper – English Version**

87) The rot **start setting with** Salman Khan, who was man enough to take off his shirt on a regular basis.

- A. started setting in
- B. started to setting in with
- C. started setting in with
- D. start setting of with
- E. No replacement required

88) The true turning point was when Shah Rukh Khan developed abs. The combination of his finely chiselled abdomen and his haunted, starving face is something that none of us **have ever forgotten**.

- A. have ever forgot
- B. No replacement required
- C. have even forgotten
- D. have even forget
- E. has ever forgot

89) **That I watched** Baba Ramdev on YouTube, his stomach rippling, his smile heavenly, I feel confident that eventually, yoga will find a way.

- A. If I watched
- B. As I watched
- C. As I watch
- D. As I watching
- E. No replacement required

90) Iran, on the other hand, **is ready by taken** limited risks, as its actions such as the threat to breach the uranium enrichment limits set by the nuclear deal and the downing of the American drone suggest, breaking the stranglehold of the sanctions.

- A. is ready to take
- B. was ready in taking
- C. are ready to take
- D. were ready to take
- E. No replacement required

91) The problem with Mr. Trump's "maximum pressure" approach is that he **doesn't seem to have** a plan between the sanctions-driven pressure tactics and a potential military conflict.

- A. he doesn't seem to having
- B. he doesn't seems to have
- C. he hasn't seem by having
- D. No replacement required
- E. he haven't seem to have

**Directions (92-95): Each question below contains a statement with a part of the sentence being bold. You have to choose the correct replacement for that bold part from the options given below to make the sentence grammatically correct. If the sentence is already perfect mark (e) as your answer**

92) The protests **was triggered** by the economic crisis led by acute shortage of foreign currency and high inflation.

- A. would triggered
- B. were triggered
- C. would triggering
- D. will triggered
- E. No replacement required

93) The iconic Eden Gardens in Kolkata is set to make history by hosting the first-ever day-night pink ball Test match **to be play** on Indian soil.

- A. to played
- B. will be played
- C. to be played
- D. to being play
- E. No replacement required

## IDBI Executive Previous Year Paper – English Version

**94)** The Hyderabad police **have stopping** citizens passing-by at any time during the day and collecting their fingerprints, photographs and personal details.

- A. have been stopping
- B. have being stopping
- C. had being stopping
- D. have stopped
- E. No replacement required

**95)** The border residents **stage a protest** against Pakistan for the unprovoked ceasefire.

- A. stage a protests
- B. staged a protest
- C. staged protest
- D. staging & protest
- E. No replacement required

**Directions (96-100): Match the column so that the formed sentences must be correct grammatically as well as contextually.**

**96)**

A. He believes the apology	D. would result in future
B. The size of below poverty line families had now become 20% from	E. 100 years of the Jallianwala tragedy
C. India and the U.K. prepare to commemorate	F. 70% during Independence despite a manifold population growth.

- A. A-F
- B. B-D,
- C. A-F, C-D
- D. B-F, C-E
- E. None of these

**97)**

COLUMN- I	COLUMN-II
A) The information is also passed to	D) women passengers during their journey on train.
B) The South Eastern Railway has launched Operation My Saheli to	E) all scheduled stoppage stations and destination stations.
C) 'Operation My Saheli (friend) gives security to	F) boost the security of women passengers in trains.

- A.B and D
- B.A and D
- C.C and E
- D.B and F
- E. None of the above is correct match.

**98)**

COLUMN- I	COLUMN-II
A) The Reserve Bank of India (RBI) has fixed the second half's Ways and Means Advances (WMA),	D) by the central bank in response to the Covid crisis.
B) This is considerably less than the Rs 2 trillion that was	E) which is a short-term lending facility to the centre, at Rs 1.25 trillion.
C) The WMA for the first half was revised up twice	F) earmarked for the government for the first half.

- A.B and D
- B.A and F
- C.C and E
- D.C and D
- E. None of the above is correct match



## IDBI Executive Previous Year Paper – English Version

99)

COLUMN- I	COLUMN-II
A) The Indian Space Research Organisation (Isro) has previously set	D) a possible indication of life in the Venus atmosphere.
B) A team of astronomers said they have discovered	E) a Venus project- Venus In situ Composition Investigations, or VICI,
C) NASA in 2017's New Frontiers competition held	F) a mission to Venus called 'Shukrayaan-1'.

A. B and E

B. A and F

C. C and D

D. B and F

E. None of the above is correct match

B. A and D

C. C and E

D. A and E

E. None of the above is correct match

100)

COLUMN- I	COLUMN-II
A) The RBI has excluded six public sector banks, including OBC and Allahabad Bank,	D) has now come down to 12.
B) A bank mentioned in the Second Schedule of the Reserve Bank of India Act	E) from the Second Schedule of the RBI Act following their merger with other banks.
C) The total number of PSBs in the country	F) is known as 'Scheduled Commercial Bank'.

A. B and D

## REASONING ABILITY

**Directions (101-103):** Study the following information carefully and answer the questions given below:

Eight persons are in a family. There are three married couples in a family. P is grandson of B, who is father of M, who is brother in law of D, who has no siblings. M is not father of P. L is mother in law of K, who is mother of N. H is only daughter of B.

**101) If N is only daughter of M, then how N is related to H?**

- A. Nephew
- B. Niece
- C. Aunt
- D. Uncle
- E. None of these

**102) How H is related to K?**

- A. Brother in law
- B. Sister in law
- C. Brother
- D. Sister
- E. None of these

**103) How P is related to L?**

- A. Granddaughter
- B. Grandson
- C. Grandmother
- D. Grandfather
- E. None of these

**Directions (104-107):** In each of the following questions, relationship between different elements is shown in the statements followed by conclusions.

Find the conclusion which is definitely true.

**104) Statements:**

$B \geq A > C = O; A < L \geq M; C \leq N \leq Z$

**Conclusions:**

- I).  $B \leq M$
- II).  $O \leq Z$
- A) If only conclusion I follows.
- B) If only conclusion II follows.
- C) If either conclusion I or II follows.
- D) If neither conclusion I nor II follows.
- E) If both conclusions I and II follows.

**105) Statements:**

$Z < O > P \geq K < N; K \leq L < M \leq C; B \geq Q < O$

**Conclusions:**

- I).  $B > P$
- II).  $C \geq P$
- A) If only conclusion I follows.
- B) If only conclusion II follows.
- C) If either conclusion I or II follows.
- D) If neither conclusion I nor II follows.
- E) If both conclusions I and II follows.

**106) Statements**

$K > O \geq L \geq A \leq C; N \geq O \leq W \leq V; X > Y < A$

**Conclusions:**

- I).  $V > A$
- II).  $V = A$
- A) If only conclusion I follows.
- B) If only conclusion II follows.
- C) If either conclusion I or II follows.
- D) If neither conclusion I nor II follows.
- E) If both conclusions I and II follows.

**107) Statements:**

$S \leq B = C < D; D \leq U = Q < N < Y$

**Conclusions:**

- I).  $S < Q$
- II).  $U < Y$
- A) If only conclusion I follows.

## IDBI Executive Previous Year Paper – English Version

- B) If only conclusion II follows.  
 C) If either conclusion I or II follows.  
 D) If neither conclusion I nor II follows.  
 E) If both conclusions I and II follows.

**Directions (108-112): Study the following information carefully and answer the questions given below:**

Eight persons H, T, Y, R, M, N, L and Z are sitting around a circular table. Some of them are facing centre and some of them facing away from the centre. Each of them likes different colour Red, Blue, Green, Yellow, Orange, Pink, Black and White but not necessarily in the same order.

Y sits second to the left of L who faces away from the center. T neither likes black nor likes yellow. The one who likes black is an immediate neighbour of L. Four persons sit between the one who likes black and H. Two persons sit between H and the one who likes yellow. Z likes orange and sits second to the left of N, who is facing the centre. Y and Z are not immediate neighbours. One person sits between T and R. Two persons sit between M and the one who likes blue. N does not like yellow. Neither T nor R is an immediate neighbour of the one who likes orange. The one who likes green sits opposite to the one who likes pink. H neither likes pink nor likes green. H does not like white. M and N faces same directions. Immediate neighbour of M faces opposite directions. The one who likes green is not facing centre. T and R faces same direction as N. H does not face the centre.

**108) Which of the following is true regarding H?**

- A. Immediate neighbours of H are facing same directions  
 B. Immediate neighbour of H are facing opposite directions  
 C. H and R are facing same direction

- D. Three persons sit between H and N  
 E. None is true

**109) M likes which of the following colour?**

- A. Green  
 B. Pink  
 C. Either Pink or Green  
 D. Red  
 E. None of these

**110) Who sits third to the left of the one who likes red?**

- A. The one who likes yellow  
 B. The one who likes black  
 C. The one who likes white  
 D. The one who likes pink  
 E. None of these

**111) Four of the following five are alike in a certain way and hence they form a group. Which one of the following does not belong to that group?**

- A. R-orange  
 B. T-black  
 C. L-red  
 D. Z-white  
 E. Y-pink

**112) If H and R are interchanged then, who sits third to the right of M?**

- A. Y  
 B. R  
 C. H  
 D. L  
 E. None of these

**Directions (113-114): Study the following information carefully and answer the below questions.**

## IDBI Executive Previous Year Paper – English Version

T walks 5 meters towards the west, then turns to his left and walks 3 meters and then turns to his right and walks 5 meters then again turning to his right he walks 10 meters then again turning to his right he walks 5 meters and stops.

**113) What is the distance between T's initial point and T's final point?**

- A.  $\sqrt{76}$  m
- B.  $\sqrt{74}$  m
- C.  $\sqrt{79}$  m
- D.  $\sqrt{82}$  m
- E. Cannot be determined

**114) In which direction is T's initial point with respect to T's final point?**

- A. North-West
- B. South-West
- C. North-East
- D. South-East
- E. None of these

**Directions (115-119): Study the following information carefully and answer the questions given below:**

Eight persons A, B, C, D, E, F, G and H are sitting around a rectangular table. Four persons sit at corner and four persons sit at middle side of the table. Those persons sit at corner faces away from the centre and those persons sit at middle side of the table faces the centre. Each one of them likes different flower Rose, Daisy, Foxglove, Begonia, Lily, aster, Camellias, and Lotus. All the above information is not necessarily in the same order. The one who likes lily sits third to the right of A. The one who likes Aster sits opposite to the one who likes lily. The one who

likes daisy sits second to the left of E. A and E are not immediate neighbours. E does not sit at any corner. The one who likes lotus sits third to the left of the one who likes Daisy. A does not like Daisy. Two persons sit between F and the one who likes rose. C sits immediate right of the one who likes rose. The one who likes rose and the one who likes lily are not immediate neighbours. C neither likes aster nor likes lotus. The one who likes camellias sits third to the left of H. G sits opposite to B. Neither G nor B likes Rose. F does not like Foxglove. G does not like lily.

**115) Four of the following five are like in a certain way based on the above arrangement. Find which one does not belongs to the group?**

- A. H-Lily
- B. A-Begonia
- C. G-Rose
- D. C-Foxglove
- E. F-Camellias

**116) How many persons sit between G and the one who likes Begonia, when counted from left of G?**

- A. One
- B. Two
- C. Three
- D. Four
- E. None of these

**117) If H is related to Begonia, E is related to lotus, in the same way C is related to which of the following?**

- A. lily
- B. aster
- C. camellias
- D. rose
- E. None of these

## IDBI Executive Previous Year Paper – English Version

**118) Which of the following is true?**

- A. As many persons sit between H and the one who likes aster sit between D and the one who likes daisy
- B. Less than two persons sit between F and the one who likes camellias, when counted from right of F
- C. B sits opposite to the one who sits immediate left of the one who likes camellias
- D. D likes lotus and is an immediate neighbour of B
- E. None is true

**119) Which of the following person likes Begonia?**

- A. G
- B. H
- C. B
- D. F
- E. None of these

**Directions (120-122): Read both the conclusions and then decide which of the given conclusions logically follows from the given statements disregarding commonly known facts.**

**120) Statement**

- Only a few Micromax is Apple
- All Apple is Microsoft
- No Microsoft is IBM

**Conclusion**

- I. Some Micro max is not IBM
- II. Some Apple is IBM
- A) If Only conclusion I follows.
- B) If Only conclusion II follows.
- C) If either conclusion I or II follows.
- D) If Neither conclusion I nor II follows.
- E) If both conclusions I and II follow.

**121) Statement**

- Only a few Flipkart are Amazon
- No Amazon is Myntra

No Snapdeal is Myntra

**Conclusion**

- I. All Flipkart being Myntra is a possibility
- II. Some Amazon being Snap deal is a possibility
- A. If Only conclusion I follows.
- B. If Only conclusion II follows.
- C. If either conclusion I or II follows.
- D. If Neither conclusion I nor II follows.
- E. If both conclusions I and II follow.

**122) Statements:**

- Only Gift is Doll
- Some Teddy is Gift
- Only a few Game is Teddy

**Conclusions:**

- I) Some Teddy can be Doll
- II). Some Game are not Teddy
- A. If Only conclusion I follows.
- B. If Only conclusion II follows.
- C. If either conclusion I or II follows.
- D. If Neither conclusion I nor II follows.
- E. If both conclusions I and II follow.

**123) How many such pairs of digits are there in the numbers "831246759" each of which has as many digits between them in the numbers as in the numerical order (both backward and forward direction)?**

- A. One
- B. Two
- C. Three
- D. None
- E. More than three

**Directions (124-127): Each of the questions below consists of a question and two statements numbered as I and II given below it. You have to decide**



## IDBI Executive Previous Year Paper – English Version

whether the data provided in the statements are sufficient to answer the question. Read all the two statements and give answer.

**124) What is the shortest distance between P and Q?**

I) Point Q is South of point P, which is 5m south of Point S. Point P is 13m north east of Point R. Point Q is 10m west of Point T and 12m east of Point R.

II) Point P is 5m north east of Point R, which is 3m west of Point Q, which is south of Point P.

- A. Only statement I
- B. Only statement II
- C. Either statement I or statement II
- D. Neither statement I nor statement II
- E. Both statement I and statement II

**125) Seven boxes A, B, C, D, E, F and G are arranged one above the other but not in the same order. Which among the following boxes is placed in the middle of the stack?**

I) Four boxes are placed between box B and box D, which is placed second from the top. Three boxes are placed between box D and box C. There is only one box between box A and box C.

II) There is equal number of boxes above or below box E.

- A. Only statement I
- B. Only statement II
- C. Either statement I or statement II
- D. Neither statement I nor statement II
- E. Both statement I and statement II

**126) Seven persons L, M, N, O, P, Q and R goes to the market on different days of week starting from Monday but not in the same order. Who goes to the market at last?**

I) O goes to the market on Wednesday. Two persons go between O and P. Three persons go between P and R. Two persons go between M and L who goes to the market on Monday. N doesn't go on Sunday.

II) M goes on Friday. Two persons go between L and M. Four persons go between L and Q.

- A. Only statement I
- B. Only statement II
- C. Either statement I or statement II
- D. Neither statement I nor statement II
- E. Both statement I and statement II

**127) Eight persons P, Q, R, S, T, U, V and W sitting around a rectangular table but not in the same order. Four of them sit at the corner while remaining sit at the middle of each side of the table. All of them are facing towards the centre. Who sits third to the right of the one who faces U?**

I) Three persons sit between R and T. U sits third to the left of T.

II) Two persons sit between S and V, who sits at the middle of the table. Q sits second to the left of V. U sits third to the left of S.

- A. Only statement I
- B. Only statement II
- C. Either statement I or statement II
- D. Neither statement I nor statement II
- E. Both statement I and statement II

**Directions (128-132): Answer the questions based on the information given below.**

A certain number of boxes are placed in a linear row facing north. The total number of boxes is a multiple of 4 but not more than 20 in a row.

The box M is placed third to the right of the box which is seventh from the left end. The box P is placed fifth to the left of the box M and is three boxes away from box J which is not placed between the boxes P and M. The number of boxes to the left of the box J is one more than the number of boxes to the right of the box K. The box L is placed to the immediate left of the box O which is third from the

## IDBI Executive Previous Year Paper – English Version

right end. The box M is placed exactly between the boxes L and N which is not placed adjacent to the box J.

128) How many boxes are there in the row?

- A.12
- B.8
- C.16
- D.20
- E.Cannot be determined

129) Which of the following box is third to the left of the box which is ninth to the right of the box N?

- A.M
- B.L
- C.O
- D.K
- E.No such box

130) How many boxes are there between the boxes P and O?

- A.Nine
- B.Seven
- C.Ten
- D.Eight
- E.Twelve

131) If all the prime positioned boxes from left to right are removed from the row, then which of the following box is fifth from the right end?

- A.M
- B.L
- C.O
- D.N
- E.Unknown box

132) What is the position of box J in the row?

- A.Eighth from the left end

- B.Fourth from the left end
- C.Third from the left end
- D.Sixth from the left end
- E.Second from the left end

**Direction (133):** In the question below is given a statement followed by two conclusions numbered I and II. You have to assume everything in the statement to be true, then consider the two conclusions together and decide which of them logically follow beyond a reasonable doubt from the information given in the statement. Give answer.

133) Statements:

I. Despite the fact that the lack of power in schools is taken note of by the Parliamentary Standing Committee which operates its own schemes and sponsors several school education programmes, India has not yet electrified a significant number of government schools.

II. According to data, only 56.45% of government schools had electricity and 56.98% a playground, while almost 40% lacked a boundary wall.

**Conclusions:**

I. The tardy progress on such important facilities, in spite of the projects having been sanctioned, shows the low priority that school education is being accorded.

II. The government-run school sector needs a fund infusion and a public school system that guarantees universal access, good learning and all facilities has to be among the highest national priorities.

- A.Only conclusion I follows
- B.Only conclusion II follows
- C.Either conclusion I or II follows
- D.Neither conclusion I nor conclusion II follows
- E.Both conclusions I and conclusion II follow

## IDBI Executive Previous Year Paper – English Version

**Directions (134-135):** In the question below is given a statement followed by two assumptions numbered I and II. An assumption is something supposed or taken for granted. You have to consider the statement and the following assumptions and decide which of the assumptions is implicit in the statement.

134)

**Statement:** In spite of the bad quality of food, employees have not complained.

**Assumptions:**

- I). Generally people complain.
- II). Complaints improve quality.
- A. Only assumption I is implicit.
- B. Only assumption II is implicit.
- C. Either assumption I or II is implicit.
- D. Neither assumption I nor II is implicit.
- E. Both the assumptions I and II are implicit.

135) The Central Information Commission (CIC) on Monday brought Indian cricket governing body BCCI under Right to Information Act. Now, this will enable BCCI to accept all the queries.

**Which of the following will be correct Assumptions for the given statement?**

I: The cricket governing body BCCI is the part of the Central Information Commission.

II: Under Right to Information Act, BCCI has to answer the queries.

III: The cricket governing body BCCI was brought under the Right to Information Act to bring transparency in their administration.

- A. Only I
- B. Only II and III
- C. Only I and II
- D. Only I and III
- E. All of these

**Directions (136- 139):** Refer to the data below and answer the questions that follow.

Eleven people I, J, K, L, M, N, O, P, Q, R and S are visiting the mall one after another but not necessarily in the same order. Two people visit between N and L. Three people visit between Q and P, who visit immediately before L. Four people visit between S and J, who visit adjacent to L. S doesn't visit just before N. Only one person visits between I and S. The number of people visits after I is double the number of people visits before N, who visit before J. R visit second from the last. Two persons visit between R and K. Neither O nor P is adjacent to M.

**136) How many persons visit between Q and R?**

- A. As many as visited between O and J
- B. Three
- C. Four
- D. As many as visited between L and I.
- E. None of these

**137) Four of the following five are alike in a certain way and hence form a group. Which of the following one does not belong to the group?**

- A. QI
- B. PL
- C. JK
- D. NO
- E. SQ

**138) The number of people visits after P is one more than the number of people visits before \_\_\_\_\_?**

- A. The one who visits just before J.
- B. R
- C. The one who visits two days after L.
- D. S
- E. None of these

## IDBI Executive Previous Year Paper – English Version

139) Who among the following visits exactly between S and K?

- A.R
- B.The person who visits immediately before N
- C.The person who visits immediately after J
- D.I
- E.None of these

140)

**Statement 1:** Competition Act provides for, keeping in view of the economic development of the country, the establishment of a Commission to prevent practices having adverse effect on competition, to promote and sustain competition in markets, to protect the interests of consumers and to ensure freedom of trade carried on by other participants in markets in India.

**Statement 2:** Anti-competitive agreements are void.

- A.Statement 1 is the cause and statement 2 is its effect.
- B.Statement 2 is the cause and statement 1 is its effect.
- C.Statement 1 and statement 2 are independent effects of independent causes.
- D.Statement 1 and statement 2 are independent effects of a common cause.
- E.Statement 1 is the cause but statement 2 is not effect

**Directions (141-145):** Study the following information carefully and answer the questions given below:

In a certain code language,

Nervous diplomatic still apprise-1\*F 7\$D 5&D 4&D

And secret concern neighbour-1@D 3\$B

4\*E 11@E

Sought party anguished whether-5@E 3\*E

9\$D 1@D

Tenure objection had-4\$B 1\*E 15&C

141) How will 'authorities' may be coded in that language?

- A.18\*E
- B.18\*F
- C.18#F
- D.18#E
- E.None of these

142) How will 'Resolved with troops' be coded in that language?

- A.14\$E 1@D 15\$C
- B.14&E 1@D 15\*E
- C.14&E 1@D 15\$C
- D.14&E 1#D 15\$C
- E.None of these

143) Which word is represented by '11&C'?

- A.against
- B.appeal
- C.appear
- D.aimed
- E.None of these

144) '2&F 5!G' would mean

- A.Challenge satisfactory
- B.Agreement security
- C.Satisfaction challenge
- D.peace satisfaction
- E.None of these

145) How will 'tranquility' may be coded in that language?

- A.6\*H
- B.5\*G
- C.5@G
- D.7\*F
- E.None of these

**IDBI Executive Previous Year Paper – English Version**

**Directions (146-150):** Study the following information carefully to answer the given questions:

There are seven persons i.e. A, B, C, D, E, F and G who lives in a building having three floors such that ground floor is numbered as 1 and above it is 2 and so on up to top floor numbered as 3. Each of the floors consists of 3 flats as at-1, at-2 and at-3. Flat-1 of floor-2 is immediately above at-1 of floor-1 and immediately below at-1 of floor-3 and in the same way at-2 of floor2 is immediately above at-2 of floor-1 and immediately below at-2 of floor-3 and so on. Flat-2 is in east of at-1 and at-3 is in east of at-2. Not less than two person lives on the same floor. Only one person lives in a flat. Two flats are vacant. Only one floor is between F and G and both live in same flat number. D lives immediately west to G. E lives immediately above C. No one lives on the east of F. C does not live in the same flat number as D. E and D do not live on the same floor. A does not live in the same flat number as C. B live below the floor on which A lives but not in the same flat number. B lives in an even numbered flat and on even numbered floor but not on the same floor on which C lives.

**146) Who among the following lives immediately above B?**

- A.A
- B.D
- C.G
- D.F

E.None of these

**147) A lives on which of the following flat?**

- A. Flat 1
- B. Flat 2
- C. Flat 3
- D. Either (a) or (b)
- E. Either (a) or (c)

**148) On which of the floor three person lives?**

- A.Floor 2
- B.Floor 1
- C.Floor 3
- D.Either (a) or (b)
- E.Either (b) or (c)

**149) Which of the following is true regarding A?**

- A.Flat 1 – Floor 2
- B.Flat 3 – Floor 3
- C.Flat 1 – Floor 3
- D.Flat 2 – Floor 2
- E.None of these

**150) D lives on which of the following floor?**

- A.1
- B.2
- C.3
- D.Can't be determined
- E.None of these



### Answer With Explanation

1) Answer: E

$$I. 2x^2 + 9x - 5 = 0$$

$$\Rightarrow 2x^2 + 10x - x - 5 = 0$$

$$\Rightarrow 2x(x + 5) - 1(x + 5) = 0$$

$$\Rightarrow (x + 5)(2x - 1) = 0$$

$$\Rightarrow x = -5, \frac{1}{2}$$

$$II. y^2 + 2y - 24 = 0$$

$$\Rightarrow y^2 + 6y - 4y - 24 = 0$$

$$\Rightarrow y(y + 6) - 4(y + 6) = 0$$

$$\Rightarrow (y - 4)(y + 6) = 0$$

$$\Rightarrow y = 4, -6$$

Hence, the relationship between x and y cannot be determined.

2) Answer: A

$$I. 7x^2 - 11x - 18 = 0$$

$$\Rightarrow 7x^2 + 7x - 18x - 18 = 0$$

$$\Rightarrow 7x(x + 1) - 18(x + 1) = 0$$

$$\Rightarrow (x + 1)(7x - 18) = 0$$

$$\Rightarrow x = -1, \frac{18}{7}$$

$$II. y^2 - 45y + 506 = 0$$

$$\Rightarrow y^2 - 22y - 23y + 506 = 0$$

$$\Rightarrow y(y - 22) - 23(y - 22) = 0$$

$$\Rightarrow (y - 23)(y - 22) = 0$$

$$\Rightarrow y = 23, 22$$

Hence,  $x < y$

3) Answer: A

$$I. 8x^2 + 18x + 9 = 0$$

$$\Rightarrow 8x^2 + 12x + 6x + 9 = 0$$

$$\Rightarrow 4x(2x + 3) + 3(2x + 3) = 0$$

$$\Rightarrow (4x + 3)(2x + 3) = 0$$

$$\Rightarrow x = -\frac{3}{4}, -\frac{3}{2}$$

$$II. 6y^2 - 11y + 4 = 0$$

$$\Rightarrow 6y^2 - 3y - 8y + 4 = 0$$

$$\Rightarrow 3y(2y - 1) - 4(2y - 1) = 0$$

$$\Rightarrow (2y - 1)(3y - 4) = 0$$

$$\Rightarrow y = \frac{1}{2}, \frac{4}{3}$$

Hence,  $x < y$

4) Answer: D

$$I. x^3 = 85184$$

$$\Rightarrow x = \sqrt[3]{85184}$$

$$\Rightarrow x = 44$$

$$II. y^2 = 1936$$

$$\Rightarrow y = \pm \sqrt{1936}$$

$$\Rightarrow y = \pm 44$$

Hence,  $x \geq y$

5) Answer: E

$$x^2 - 29x + 204 = 0$$

$$x^2 - 12x - 17x + 204 = 0$$

$$x(x - 12) - 17(x - 12) = 0$$

$$(x - 12)(x - 17) = 0$$

$$x = 12, 17$$

$$y^2 + 4y - 221 = 0$$

$$y^2 + 17y - 13y - 221 = 0$$

$$y(y + 17) - 13(y + 17) = 0$$

$$(y - 13)(y + 17) = 0$$

$$y = 13, -17$$

Hence, The relationship between x and y can't be determined.

Directions (6-10):

## IDBI Executive Previous Year Paper – English Version

Boxes	Total of number of fruits	Damaged fruits	Good fruits	Number of good apple	Number of good orange	Number of damaged Orange	Number of damaged apple
A	4000	1600	2400	1800	600	1000	600
B	3600	1200	2400	1200	1200	400	800
C	4400	1100	3300	1320	1980	600	500
D	4800	1800	3000	1200	1800	900	900
E	5000	1000	4000	1600	2400	600	400

**6) Answer: C**

$$\text{Average} = (600 + 800 + 500 + 900 + 400)/5 = 640$$

**7) Answer: C**

$$\begin{aligned} \text{Required ratio} &= 1800:800 \\ &= 9:4 \end{aligned}$$

**8) Answer: D**

$$\begin{aligned} \text{Average good orange} &= (600 + 1200 + 1980 + 1800 \\ &+ 2400)/5 = 1596 \end{aligned}$$

$$\begin{aligned} \text{Average number of damaged fruits} &= (1600 + 1200 + \\ &1100 + 1800 + 1000)/5 = 1340 \end{aligned}$$

$$\text{Difference} = 1596 - 1340 = 256$$

**9) Answer: C**

$$\text{Required percentage} = (3000/3600) * 100 = 83.33\%$$

**10) Answer: B**

$$\begin{aligned} \text{Required ratio} &= 2400:1320 \\ &= 20:11 \end{aligned}$$

**11) Answer: E**

**In scheme A:**

$$P * (1 + r/100)^2 = P * (108.16/100)$$

$$(1 + r/100)^2 = 10816/10000$$

$$(1 + r/100)^2 = 676/625$$

$$1 + r/100 = 26/25$$

$$r/100 = (26/25) - 1$$

$$r = 4\%$$

**In scheme B:**

$$\text{Rate of interest} = 2.5 * 4 = 10\%$$

So,

$$(P + 1000) * (1 + 10/100)^2 = P + 1000 + 735$$

$$(P + 1000) * (121/100) = P + 1735$$

$$121P + 121000 = 100P + 173500$$

$$21P = 52500$$

$$P = 2500$$

$$\text{Amount invested in scheme A} = \text{Rs.}2500$$

$$\begin{aligned} \text{So, interest received from scheme A} &= 8.16\% \text{ of} \\ &2500 = \text{Rs.}204 \end{aligned}$$

**12) Answer: D**

$$A + B = 300/100 * 10 = 30 \text{ days}$$

$$C + D = 100/85 * 17 = 20 \text{ days}$$

$$A + B + C = 2/1 * 7.5 = 15 \text{ days}$$

$$C = 1/15 - 1/30 = 1/30$$

$$D = 1/20 - 1/30 = 1/60$$

$$A + D = 300/200 * 16 = 24 \text{ days}$$

$$A = 1/24 - 1/60 = (5 - 2)/120 = 1/40$$

$$B = 1/30 - 1/40 = 1/120$$

$$\begin{aligned} \text{B complete 40\% of the work} &= 40/100 * 120 = 48 \\ &\text{days} \end{aligned}$$

**13) Answer: C**

Given,

$$\text{Total number of probability} = 9+x$$

$$\text{Required probability} = 5/(9+x) = 1/3$$

$$\Rightarrow 9+x=15 \Rightarrow x=6$$

$$\text{Total number of balls} = 4+5+6 = 15 \text{ balls}$$

**14) Answer: C**

Let, initial amounts invested by Ramesh, Nimo and Binabe Rs.5k, Rs.8k and Rs.3k respectively.

Ratio of shares in the profit:

## IDBI Executive Previous Year Paper – English Version

Ramesh : Nimo : Bina =  $(5k \times 2 + 10k) : (8k + 12k \times 2) : (3k + 6k \times 2)$   
 $= 20k : 32k : 15k$   
 $= 20 : 32 : 15$   
 Share of Nimo in the profit =  $[32 / (20 + 32 + 15)] \times 134000$   
 $= 32/67 \times 134000$   
 $= \text{Rs.} 64000$

### Directions (15-19):

Total number of players = 1500  
 Total number of badminton players =  $(30/100) \times 1500 = 450$   
 Total number of hockey players =  $1/5 \times 1500 = 300$   
 Total number of lawn tennis players =  $(17/100) \times 1500 = 255$   
 Total number of athletics =  $(15/100) \times 1500 = 225$   
 Total number of rugby (remaining) =  $1500 - (450 + 300 + 255 + 225) = 270$   
 Number of female hockey players =  $2/5 \times 300 = 120$   
 Number of male hockey players =  $300 - 120 = 180$   
 Number of male badminton player = total number of rugby player = 270  
 Number of female badminton player =  $450 - 270 = 180$   
 Number of male lawn tennis =  $(11/17) \times 255 = 165$   
 Number of female lawn tennis =  $(6/17) \times 255 = 90$   
 Number of female athletes = 170  
 Number of male athletes =  $225 - 170 = 55$   
 Number of male rugby players = Number of female athletes = 170  
 Number of female rugby =  $270 - 170 = 100$

Games	Males	Females	Total
Athletics	55	170	225
Hockey	180	120	300
Lawn tennis	165	90	255
Rugby	170	100	270
Badminton	270	180	450

**15) Answer: E**

Required percent =  $(180/270) \times 100 = 66.67\%$

**16) Answer: B**

The sum of male players who participated both in hockey and rugby =  $180 + 170 = 350$

The sum of female players who participated in both lawn tennis and badminton =  $90 + 180 = 270$

Required difference =  $350 - 270 = 80$

**17) Answer: B**

The ratio of the male badminton player to the female hockey player =  $270 : 120 = 9 : 4$

**18) Answer: C**

If there is an increase of 10%, then the total number of female players participating in hockey and badminton = 110% of  $(120 + 180) = 330$

After increment, the total female players =  $170 + 90 + 100 + 330 = 690$

**19) Answer: B**

After removing athletics, the total number of players =  $1500 - 225 = 1275$

After removing male athletes, the total number of male players =  $180 + 165 + 170 + 270 = 785$

Required percentage =  $(785/1275) \times 100 = 61 (29/51)\%$

**20) Answer: C**

## IDBI Executive Previous Year Paper – English Version

Number of Book A sold in Pune = 450

Number of Book C sold in Mumbai = 500

Required percentage =  $(450/500) \times 100 = 90\%$

**21) Answer: C**

Number of Book B sold in Mumbai = 420

Number of Book A sold in Delhi = 360

Required ratio =  $420:360 = 7:6$

**22) Answer: C**

Number of Book A sold in Chennai = 420

Number of Book B sold in Chennai = 540

Number of Book C sold in Chennai = 440

Total number of all books sold in Chennai =  $420 + 540 + 440 = 1400$

**23) Answer: D**

Number of Book B sold in Delhi = 460

Number of Book C sold in Pune = 480

Required difference =  $480 - 460 = 20$

**24) Answer: B**

Number of Book C sold in Bangalore = 500

Number of Book A sold in Bangalore = 250

Required percentage =  $(500 - 250)/250 \times 100$

$= 250/250 \times 100$

$= 100\%$

**25) Answer: C**

$\sqrt{289} \times 14 \div 7 = ?^2 + (8)^{1/3} + 28 \div 4$

$17 \times (14/7) = x^2 + 2 + (28/4)$

$34 - 2 - 7 = x^2$

$x^2 = 25$

$x = 5$

**26) Answer: A**

$13 \frac{4}{5} + 8 \frac{1}{10} - 11 \frac{2}{5} + 16 \frac{3}{10} = x - 3 \frac{4}{5}$

$14 + 8 - 11 + 16 + 4 = x$

$X = 31$

**27) Answer: C**

$(42/100) \times 1250 - (16/100) \times 1100 = (x/100) \times 500$

$525 - 176 = 5x$

$5x = 349$

$X = 349/5 = 70$

**28) Answer: A**

$279.908 + 1499.897 \div 29.912 \times 11.11 = ? + 82.210 \times 3.908$

$280 + 50 \times 11 = ? + 328$

$502 = ?$

**29) Answer: D**

$69.904 \% \text{ of } 129.998 + 19.879 \times 4.102 - 25.021 \% \text{ of } 443.934 = ?$

$91 + 80 - 111 = ?$

$60 = ?$

**30) Answer: A**

$224.912 \% \text{ of } 39.908 + ? \times 12.193 = 1794.173 \div 22.914$

$90 + ? \times 12 = 78$

$? = -1$

**31) Answer: B**

$840.98 \div 28.99 + ? = 112.08$

$841/29 + ? = 112$

$= > 29 + ? = 112$

$= > ? = 83$

**32) Answer: A**

$9 \times 6 = 54$

$54 \times 5.5 = 297$

$297 \times 5 = 1485$

## IDBI Executive Previous Year Paper – English Version

$$1485 \times 4.5 = 6682.5$$

$$6682.5 \times 4 = 26730$$

**33) Answer: B**

$$19 + (1+9) = 29$$

$$29 + (2+9) = 40$$

$$40 + (4+0) = 44$$

$$44 + (4+4) = 52$$

$$52 + (5+2) = 59$$

$$59 + (5+9) = 73$$

**34) Answer: A**

$$7 \times 2 = 14$$

$$14 \times 3 = 42$$

$$42 \times 5 = 210$$

$$210 \times 7 = 1470$$

$$1470 \times 11 = 16170$$

**35) Answer: E**

$$23 + (2 \times 3) = 29$$

$$29 + (2 \times 9) = 47$$

$$47 + (4 \times 7) = 75$$

$$75 + (7 \times 5) = 110$$

$$110 + (1 \times 1 \times 0) = 110$$

**36) Answer: C**

$$469 - 9^2 + 15 = 403$$

$$403 - 8^2 + 14 = 353$$

$$353 - 7^2 + 13 = 317$$

$$317 - 6^2 + 12 = 293$$

$$293 - 5^2 + 11 = 279$$

**37) Answer: D**

$$\text{Speed of the boat in still water} = 40/2 = 20 \text{ kmph}$$

$$\text{Speed of the stream} = W$$

$$\text{Downstream speed} = 20 + W$$

$$\text{Upstream speed} = 20 - W$$

$$20 + W/20 - W = 3/1$$

$$60 - 3W = 20 + W$$

$$4W = 40$$

$$W = 10 \text{ kmph}$$

**38) Answer: D**

$$\text{Total SP} = 6000 + 6000 = \text{Rs. } 12000$$

$$\text{CP of the first mobile} = 100/120 \times 6000 = \text{Rs. } 5000$$

$$\text{CP of second mobile} = 100/80 \times 6000 = \text{Rs. } 7500$$

$$\text{Total CP} = 5000 + 7500 = \text{Rs. } 12500$$

$$\text{Loss} = 12500 - 12000 = \text{Rs. } 500$$

**39) Answer: B**

$$P \times 1 \times 10/100 + P \times 1 \times 12/100 + P \times 14 \times 1/100 = 9000$$

$$10P + 12P + 14P = 900000$$

$$P = \text{Rs. } 25000$$

**40) Answer: D**

The original fraction is,

$$= > (x \times (450/100)) / (y \times (250/100)) = 27/50$$

$$= > x/y = (27 \times 5) / (9 \times 50) = 3/10$$

**41) Answer: B**

Ratio of profit share of L, M and N is,

$$= 14 \times 5 : 10 \times 4 : 13 \times 6$$

$$= 70 : 40 : 78$$

$$= 35 : 20 : 39$$

$$\text{So, Required difference} = (39 + 20 - 35 - 20)$$

$$\times \{94000 / (35 + 20 + 39)\}$$

$$= \text{Rs. } 4000 \text{ less than M and N together}$$

**42) Answer: C**

$$\text{Let the total population in the city} = 100x$$

$$\text{Increase after 3 years} = 100x \times 130/100 \times 110/100 \times$$

$$90/100 = 128.7x$$

$$\text{Required average} = (100 - 128.7)/3 = 28.7/3 = 9.57$$



## IDBI Executive Previous Year Paper – English Version

**Directions (43-47):**

Companies	Total employees	Male employees	Female employees
A	500	300	200
B	600	500	100
C	800	200	600
D	1000	700	300
E	300	300	0
F	400	400	0

**43) Answer: A**

Female Employees in A:  $(50 / 360) * 3600 - (45 / 360) * 2400 = 200$

Female Employees in C:  $(80 / 360) * 3600 - (30 / 360) * 2400 = 600$

Required Difference = 400

**44) Answer: B**

Required ratio

$$\begin{aligned}
 &= (75/360 * 2400) + (30/360 * 2400) : (100/360 * 3600 - 105/360 * 2400) + (30/360 * 3600 - 45/360 * 2400) \\
 &= 500 + 200 : 300 + 0 \\
 &= 7:3
 \end{aligned}$$

**45) Answer: C**

$$\begin{aligned}
 \text{Total} &= [(60 / 360) * 3600 - (75 / 360) * 2400] + [(80 / 360) * 3600 - (30 / 360) * 2400] + [(100 / 360) * 3600 - (105 / 360) * 2400] \\
 &= 100 + 600 + 300 = 1000
 \end{aligned}$$

**46) Answer: A**

$$\text{Female C: } (80 / 360) * 3600 - (30 / 360) * 2400 = 600$$

$$\text{Female D: } (100 / 360) * 3600 - (105 / 360) * 2400 = 300$$

$$\text{Female E: } (30 / 360) * 3600 - (45 / 360) * 2400 = 0$$

$$\text{Required \%} = 300 / 300 * 100 = 100\%$$

**47) Answer: C**

$$\text{Female Employees in D} = (100 / 360) * 3600 - (105 / 360) * 2400 = 300$$

$$\text{Male Employees in F and C} = 90 / 360 * 2400 = 600$$

$$\text{Required percentage} = 300 / 600 * 100 = 50\%$$

**48) Answer: A**

$$1+12=13$$

$$13+24=37$$

$$37+48=85$$

$$85+96=181$$

$$181+192=373$$

$$373+384=757$$

Wrong number is 37

**49) Answer: B**

$$9216/4=2304$$

**IDBI Executive Previous Year Paper – English Version**

$$2304/4=576$$

$$576/4=144$$

$$144/4=36$$

$$36/4=9$$

**Wrong number is 12**

**50) Answer: B**

$$11*2=22$$

$$22*3=66$$

$$66*2=132$$

$$132*3=396$$

$$396*2=792$$

**51) Answer: B**

Given the near-term inflation trajectory and lower probability of negative shocks amid moderating global growth a rate cut now could spur growth and address the issue of high real interest rate hampering investment activity

**52) Answer: A**

What drove valuations was the narrative around improving macro stability and reforms agenda, which helped improve investors' confidence on India's long-term growth potential, said analysts at UBS.

**53) Answer: D**

While global slowdown worries caused some panic, the disconnect between the narrative and ground realities as well as the large gap between earnings and valuations, were too large to ignore

**54) Answer: A**

Monday's inflation numbers also point to weaker economic growth and the markets were quick to

react, with most indices across Asia heading lower, showing up the fragility in investor sentiment

**55) Answer: E**

According to the Organization for Economic Cooperation and Development, growth is cooling in the world's major economies, particularly in Germany and now China, suggesting that momentum this year could be even slower than what has been predicted.

**56) Answer: C**

c-d: The consumer demand for a wide variety of heavy and light products has slumped is clear from sagging sales being suffered by companies operating in assorted markets.

**57) Answer: C**

b-d Recent revelations of gaps in the MCA-21 database, maintained by the ministry of corporate affairs and used by the Central Statistics Office for its official GDP computation, has added to the problem of Indian data reliability.

**58) Answer: D**

a-b

With no evidence that religious belief in itself causes violence, the murderous acts of a few self-avowed believers say nothing at all about the broader belief system they swear allegiance to.

**59) Answer: A**

a-c

The aid comes when economic growth is expected to hit the lowest, the public exchequer's finances have dwindled and the country's foreign exchange reserves have shrunk to levels barely enough to cover two months' imports.

**60) Answer: B**

a-c Populism can be costly, and the country has rarely shown good fiscal control but unless state revenues are raised and expenditure reined in, it cannot expect the base conditions of low inflation and cheap capital.

**61) Answer: D**

The passage is about indoor pollutants.

**62) Answer: D**

From the lines “Air pollutants that are generally present in very low concentrations can assume significance in closed ill-ventilated places. The indoor air pollution can lead to allergic reactions and cause irritation to the skin, the eyes and the nose. But as is logical to assume, the brunt of insult by pollutants is borne by the lungs. It can lead to the development of fresh breathing problems.” the question can be answered.

**63) Answer: B**

From the lines,  
“Tobacco smoke is one of the most important air pollutants in closed places. “Passive smoking” or environmental tobacco smoke (ETS) pollution can lead to all the harmful effects of tobacco smoking seen in the smokers in their non-smoking companions. One can occasionally see signs displaying the all-important message: “Your smoking is injurious to my health” in offices and homes. The children of smoking parents are among the worst affected persons. The exposure of young children to ETS leads to increased respiratory problems and hospital admissions as compared to non-exposed children.” this question can be answered.

**64) Answer: D**

From the lines,  
“Other indoor pollutants are toxic chemicals like cleansing agents, pesticides, paints, solvents and inferior-quality personal-care products, especially aerosols”, this question can be answered.

**65) Answer: B**

**Refrain/Desist** -stop oneself from doing something

**66) Answer: C**

**Irritation/Vexation** - the state of feeling annoyed, impatient, or slightly angry

**67) Answer: A**

**exposure** -the state of having no protection from something harmful.

**68) Answer: B**

**Exceptional**-It is unique one. Not spread-ed by everywhere

**Prevalent** - widespread in a particular area or at a particular time

**69) Answer: C**

According to the sentence **ruthlessly** will be used as it means without pity or compassion or unethically

**70) Answer: B**

According to the sentence **crunch** will be used as it means crisis

**71) Answer: D**

According to the sentence **hoarding** will be used as it means to gather

**IDBI Executive Previous Year Paper – English Version****72) Answer: B**

According to the sentence **stalled** will be used as it means delayed or halted

**73) Answer: D**

Notified is used in this blank which means inform (someone) of something, typically in a formal or official manner/give notice of or report (something) formally or officially.

**74) Answer: B**

Enlarged is used in this blank which means having become or been made larger.

**75) Answer: A**

Warnings is used in this blank which means a statement or event that warns of something or that serves as a cautionary example./ cautionary advice./ advance notice of something.

**76) Answer: C**

The word Amendment is used here which means a minor change or addition designed to improve a text, piece of legislation, etc./ an article added to the US Constitution./ something which is added to soil in order to improve its texture or fertility.

**77) Answer: B**

Quitline is used in this blank which is a telephone helpline offering treatment for addiction and behavior change/issues. Presently most quitlines treat tobacco or alcohol addiction. Quitlines are treatment centres that offer advanced treatment and should not be confused with call centres

**78) Answer: A**

Indicated is used in this blank which means point out; show./ suggest as a desirable or necessary course of action.

**79) Answer: D**

Warning is used in this blank which means a statement or event that warns of something or that serves as a cautionary example/ cautionary advice. Advance notice of something.

**80) Answer: B**

The meaning of “decadent” is “corrupt or degraded”

**81) Answer: A**

The meaning of “debacle” is  
“an event or situation that is a complete failure”

**Directions (82-86):**

Here the paragraph is discussing the US election. It is first being introduced in part F which compares Election Night in America with New Year’s Eve. Followed by A, which says why it says so! Then it is followed by part B which says how this year is different, ‘this year the entertainment factor will be compromised’. Followed by D which gives one more reason why this year is different. Followed by C and finally concluded with E.

The correct sequence of the paragraph should be FABDCE

F) In recent years, Election Night in America has become a lot like New Year’s Eve. Bars, restaurants and hotel ballrooms fill up with revellers; colleges host watch parties; kids beg their parents to stay up late.

A) And everywhere, people tune into election-night coverage. In 2016, more than 71 million Americans

**IDBI Executive Previous Year Paper – English Version**

watched the returns come in real time, about twice as many as watched the ball drop in Times Square.

B) This year the entertainment factor will be compromised. The munching of red, white and blue tortilla chips is still permitted, but this is no time to be crowding into bars and parties.

D) And there's another potential downer: Delays in counting the votes could mean the evening ends in frustration for both sides.

C) That would be a pity — but there'd be no need to call it a crisis. Even if one candidate handily wins the popular vote and the Electoral College, it could take days or weeks to know it. Take Pennsylvania, which went narrowly for Trump in 2016.

E) Some 2.4 million voters there have already cast ballots, thanks to this year's unprecedented expansion of voting by mail. According to state law, none can be processed before Tuesday, when officials will be busy running in-person operations.

**82) Answer: D**

**83) Answer: E**

**84) Answer: C**

**85) Answer: B**

**86) Answer: B**

**87) Answer: C**

Option A) is incorrect; because this does not make a grammatically correct sentence.

Option B) is incorrect; the form of preposition used is incorrect, 'to setting' is wrong.

Option D) is incorrect; because the form of preposition 'of' used is incorrect.

**88) Answer: B**

The statement is grammatically and contextually correct and meaningful. So, there is no error

**89) Answer: C**

Option A) is incorrect; because the form of verb 'watched' is incorrectly used here.

Option B) is incorrect; since the form of verb 'watched' is incorrectly used here.

Option D) is incorrect; because the sentence is grammatically incorrect; should use 'I am' instead

**90) Answer: A**

Option B) is incorrect; since the sentence is in simple present tense, we cannot use 'was'.

Option C) is incorrect; because Iran is a single entity, so 'are' is incorrect.

Option D) is incorrect; because Iran is a single entity, so 'were' is incorrect.

**91) Answer: D**

The statement is grammatically and contextually correct and meaningful. So, there is no error

**92) Answer: B**

'were triggered' is the correct replacement.

**93) Answer: C**

'to be played' is the correct replacement.

**94) Answer: A**

'have been stopping' is the correct replacement.

**95) Answer: B**

'staged a protest' is the correct replacement.

Match the column

**96) Answer: D**

The size of below poverty line families had now become 20% from 70% during Independence despite a manifold population growth.



## IDBI Executive Previous Year Paper – English Version

India and the U.K. prepare to commemorate 100 years of the Jallianwala tragedy

**97) Answer: D**

Correct sentences are

The South Eastern Railway has launched Operation My Saheli to boost the security of women passengers in trains.

'Operation My Saheli (friend) gives security to women passengers during their journey on train.

The information is also passed to all scheduled stoppage stations and destination stations.

**98) Answer: D**

Correct sentences are

The Reserve Bank of India (RBI) has fixed the second half's Ways and Means Advances (WMA), which is a short-term lending facility to the centre, at Rs 1.25 trillion.

This is considerably less than the Rs 2 trillion that was earmarked for the government for the first half.

The WMA for the first half was revised up twice by the central bank in response to the Covid crisis.

**99) Answer: B**

Correct sentences are

The Indian Space Research Organisation (Isro) has previously set a mission to Venus called 'Shukrayaan-1'.

A team of astronomers said they have discovered a possible indication of life in the Venus atmosphere.

NASA in 2017's New Frontiers competition held a Venus project- Venus In situ Composition Investigations, or VICI

**100) Answer: D**

Correct sentences are:

The RBI has excluded six public sector banks, including OBC and Allahabad Bank, from the Second Schedule of the RBI Act following their merger with other banks.

A bank mentioned in the Second Schedule of the Reserve Bank of India Act is known as 'Scheduled Commercial Bank'.

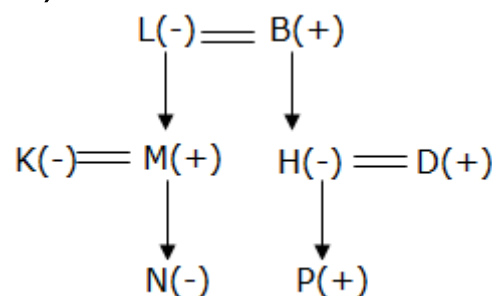
The total number of PSBs in the country has now come down to 12.

**Directions (101-103):**

**101) Answer: B**

**102) Answer: B**

**103) Answer: B**



**104) Answer: B**

I.  $B \leq M$  ( $B \geq A < L \geq M$ ) -->False

II.  $O \leq Z$  ( $O = C \leq N \leq Z$ ) -->True

**105) Answer: D**

I.  $B > P$  ( $B \geq Q < O > P$ ) -->False

II.  $C \geq P$  ( $P \geq K \leq L < M \leq C$ ) -->False

**106) Answer: C**

I.  $V > A$  ( $V \geq W \geq O \geq L \geq A$ ) -->False

II.  $V = A$  ( $V \geq W \geq O \geq L \geq A$ ) -->False

**107) Answer: E**

$S \leq B = C < D$ ;  $D \leq U = Q < N < Y$

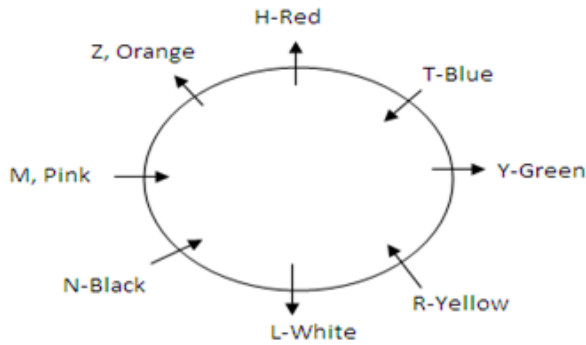
I)  $S < Q$  ( $S \leq B = C < D \leq U = Q$ )-->True

**IDBI Executive Previous Year Paper – English Version**

II)  $U < Y$  ( $U = Q < N < Y$ ) --> True

So, both the conclusion are follows.

**Directions (108-112):**



108) Answer: B

109) Answer: B

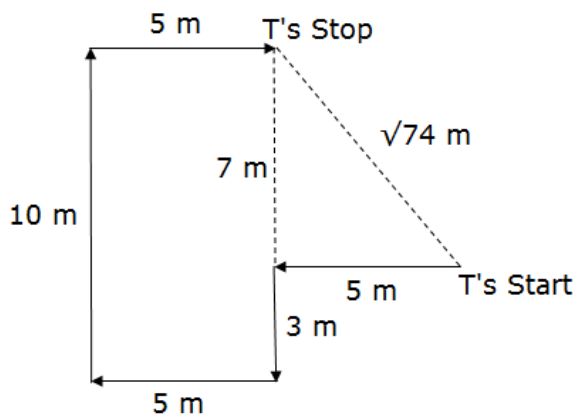
110) Answer: B

111) Answer: D

112) Answer: C

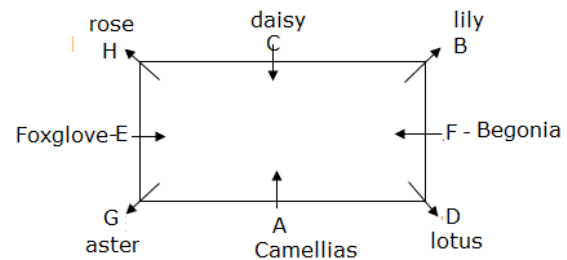
**Directions (113-114):**

113) Answer: B

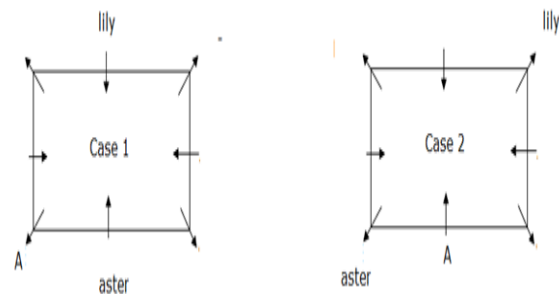


114) Answer: D

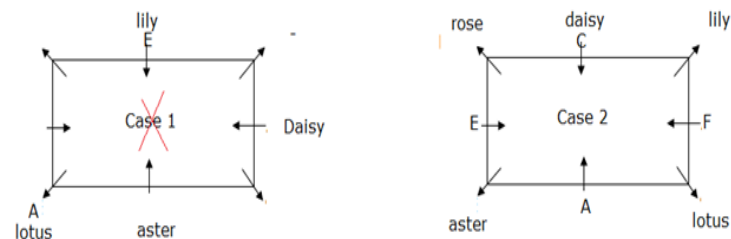
**Directions (115-119):**



The one who likes lily sits third to the right of A. The one who likes Aster sits opposite to the one who likes lily.



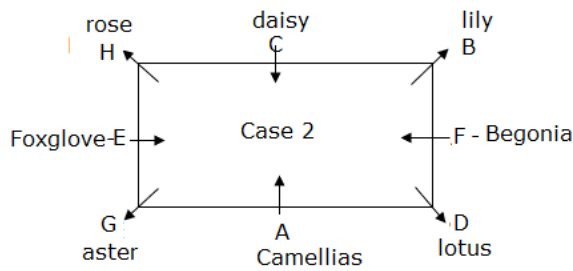
The one who likes daisy sits second to the left of E. A and E are not immediate neighbours. E does not sit at corner. The one who likes lotus sits third to the left of the one who likes Daisy. A does not like Daisy. Two persons sit between F and the one who likes rose. C sits immediate right of the one who likes rose. The one who likes rose and the one who likes lily are not immediate neighbours. C neither likes aster nor likes lotus.



Case 1 will be dropped because two persons sit between F and the one who likes rose. C sits immediate right of the one who likes rose.

The one who likes camellias sits third to the left of H. G sits opposite to B. Neither G nor B likes Rose. F does not like Foxglove. G does not like lily.

**IDBI Executive Previous Year Paper – English Version**



115) Answer: E

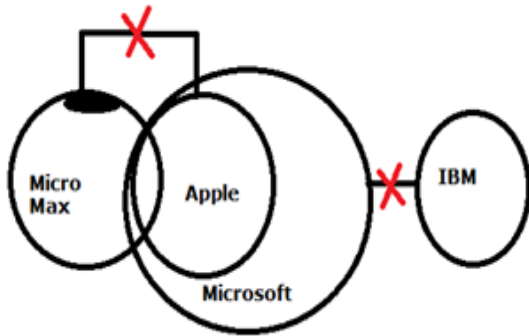
116) Answer: B

117) Answer: B

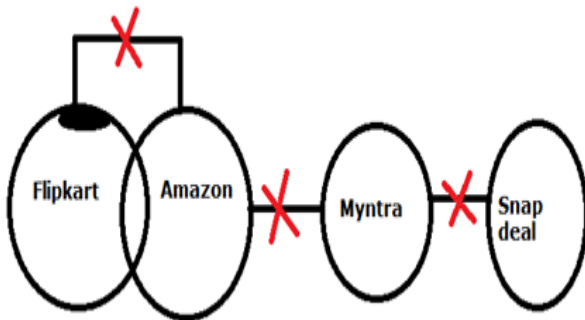
118) Answer: C

119) Answer: D

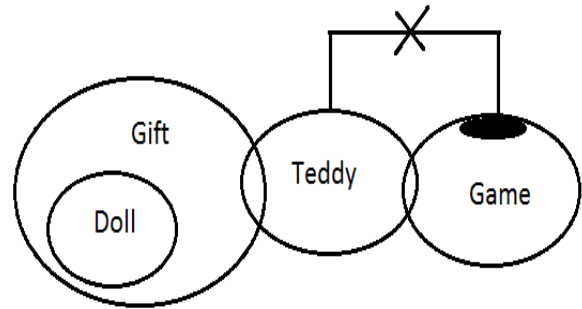
120) Answer: A



121) Answer: B

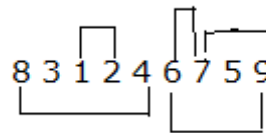


122) Answer: B



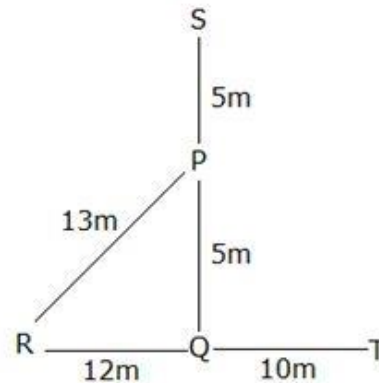
So, only conclusion II follows.

123) Answer: E

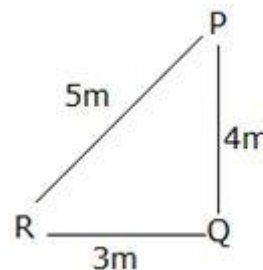


124) Answer: C

I)



II)



Either I or II statement is required to answer the question.

125) Answer: C

I)

**IDBI Executive Previous Year Paper – English Version**

D
A
C
B

II)

E

Either I or II statement is required to answer the question.

126) Answer: C

I)

Mon	Tue	Wed	Thu	Fri	Sat	Sun
L	R	O	M	N	P	Q

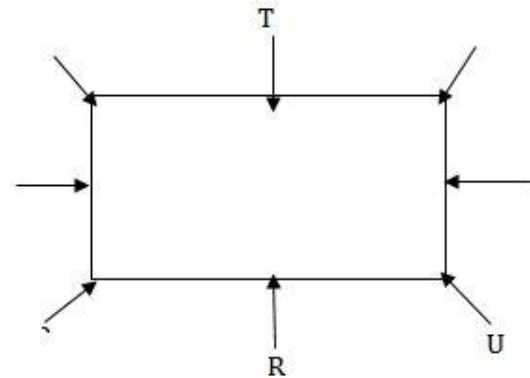
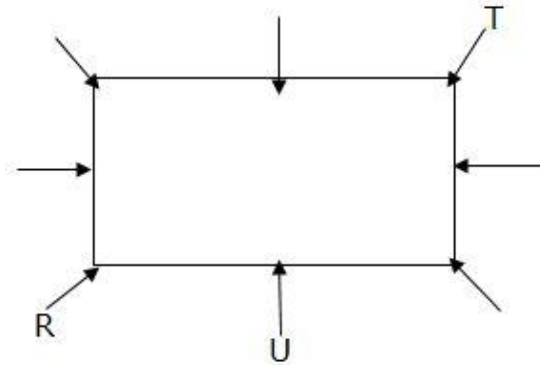
II)

Mon	Tue	Wed	Thu	Fri	Sat	Sun
	L			M		Q

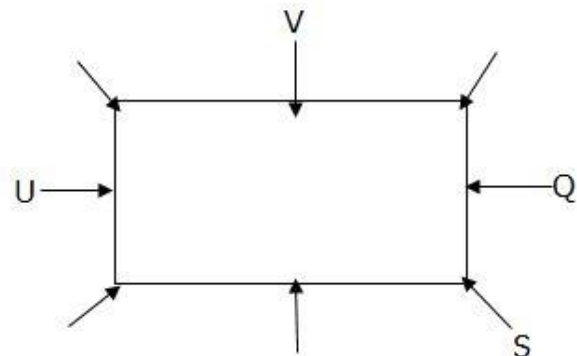
Either Statement I or Statement II is required to answer the question.

127) Answer: A

I)

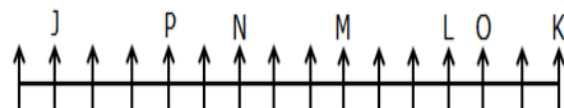


II)



Only I statement is required.

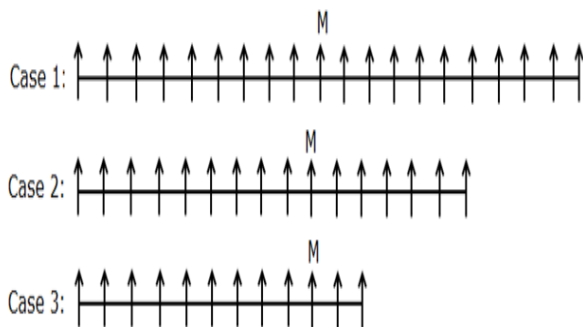
Directions (128-132):



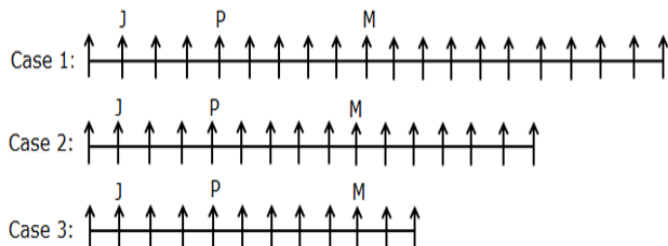
1. The total number of boxes is a multiple of 4 but not more than 20 in a row.

## IDBI Executive Previous Year Paper – English Version

2. The box M is placed third to the right of the box which is seventh from the left end.

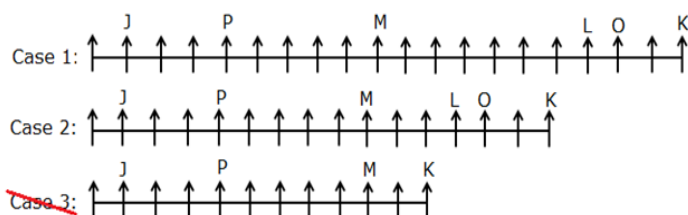


3. The box P is placed fifth to the left of the box M and is three boxes away from box J which is not placed between the boxes P and M.

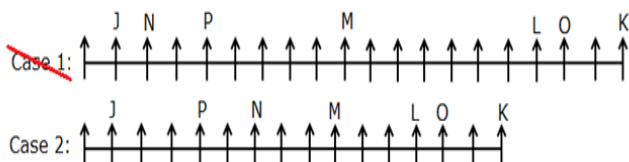


4. The number of boxes to the left of the box J is one more than the number of boxes to the right of the box K.

5. The box L is placed to the immediate left of the box O which is third from the right end. Hence, case 3 gets eliminated.



6. The box M is placed exactly between the boxes L and N which is not placed adjacent to the box J. Hence, case 1 gets eliminated.



128) Answer: C

129) Answer: B

130) Answer: D

131) Answer: A

132) Answer: E

133) Answer: E

According to the statements, it is understood that the centre and state governments are not giving enough priority in developing the education system of government-run schools. They need fund infusion and all the facilities to be provided to government-run schools have to be among the highest national priorities. Therefore, both the conclusions follow.

134) Answer: A

Effect of complaints cannot be assumed as nothing is given about time frames or consequences in the statement. So assumption II is not implicit. The words 'in spite of people have not complained' tells us that this contrary to norm. Thus generally people must complain. Hence assumption I is implicit.

135) Answer: B

The cricket governing body BCCI was brought under the Right to Information Act to accept the queries, thus bringing transparency in their administration. So, II and III follow. The Central Information Commission set up under the Right to Information Act is the authorized body of act upon complaints from those individuals and BCCI is the cricket governing body. Hence I does not follow. Thus, option b is the solution

**Directions (136- 139):**



## IDBI Executive Previous Year Paper – English Version

Case 1a

Persons
M
N
O
P
L
J
K
Q
I
R
S

Eleven people I, J, K, L, M, N, O, P, Q, R, and S visiting the mall one after another.

Two people visit between N and L. Three people visit between Q and P, who visit immediately before L.

So, we have the 3 possible cases:

Case 1

Persons
Q
N
P
L

Case 1a

Persons
N
P
L
Q

Case 2

Persons
Q
P
L
N

Four people visit between S and J, who visits adjacent to L. S doesn't visit just before N. So, case 1 gets eliminated.

## IDBI Executive Previous Year Paper – English Version

Case 1	Case 1a	Case 2
<del>Persons</del>	Persons	Persons
Q	N	Q
S		S
N	P	
	L	
P	J	P
L		L
J	Q	J
		N
	S	

Only one person visits between I and S. The number of people visits after I is double the number of people visits before N, who visit before J. By this condition, case 2 is eliminated.

Case 1a	<del>Case 2</del>
Persons	Persons
	Q
N	S
P	
L	P
J	L
	N
Q	
I	N
S	

R visit second from the last. Two persons visit between R and K. Neither O nor P is adjacent to M.

## IDBI Executive Previous Year Paper – English Version

Case 1a

Persons
M
N
O
P
L
J
K
Q
I
R
S

136) Answer: E

137) Answer: E

138) Answer: C

139) Answer: D

140) Answer: A

Since the Competition Act provides for, keeping in view of the economic development of the country, statement 2 becomes the effect of the cause mentioned in statement 1.

### Directions (141-145)

Number-Represent the difference between the first and last letter in a word

Symbol-Number of vowels

1 vowel-\$

2 vowel-@

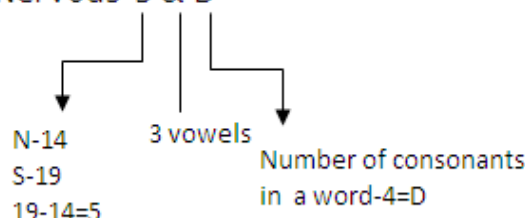
3 vowel-&

4 vowel-\*

Letter-Equivalent value of the number of consonants count

e.g.

Nervous-5 & D



141) Answer: D

142) Answer: C

143) Answer: B

144) Answer: C

145) Answer: B

### Directions (146-150):

Only one floor is between F and G and both live in same flat number. D lives immediately west to G. No one lives on the east of F.

	Case 1			Case 2			Case 3			Case 4		
Floor	Flat 1	Flat 2	Flat 3	Flat 1	Flat 2	Flat 3	Flat 1	Flat 2	Flat 3	Flat 1	Flat 2	Flat 3
3		F	Nil			F	D	G			D	G
2												
1	D	G			D	G		F	Nil			F

E lives immediately above C. C does not live in the same flat number as D. E and D do not live on the same floor. So, case 3 will be eliminated.

	Case 1			Case 2a			Case 2b			Case 4		
Floor	Flat 1	Flat 2	Flat 3	Flat 1	Flat 2	Flat 3	Flat 1	Flat 2	Flat 3	Flat 1	Flat 2	Flat 3
3		F	Nil			F	E		F		D	G
2			E	E			C			E		
1	D	G	C	C	D	G		D	G	C		F

**IDBI Executive Previous Year Paper – English Version**

Now, A does not live in the same flat number as C. B lives below the floor on which A lives but not in the same flat number. B lives in an even number and on even numbered flat but not on the floor on which C lives. So, case2 (a) and case2 (b) and case 4 get eliminated.

Floor	Flat 1	Flat 2	Flat 3
3	A	F	Nil
2	Nil	B	E
1	D	G	C

146) Answer: D

147) Answer: A

148) Answer: B

149) Answer: C

150) Answer: A

# Grand Bundle PDF Course 2021

## Exams Covered:

**SBI Clerk | SBI PO | IBPS RRB PO |  
IBPS RRB Clerk | IBPS PO | IBPS Clerk**

### Seperate PDF Course for All Major Bank pre + Mains Exams

- Total No. of Ques: **40,000+**
- Question in Bilingual (**Eng & Hindi**)
- Answers With Detailed **Video Solution**
- Provides you **50 days Study Planner** for each exams
- **Covers All Types** of Questions in Each Topic
- Questions in **Exact Exam Level**
- All Our PDFs are **Downloadable**
- **100% Satisfaction** Assured & It's Worthy for your money
- Download as PDF & also take **Quiz with Timer**



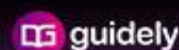
**Grab It Now**

## Yearly Platinum Package

All Bank + Insurance + Railway + SSC Exams

**1 Year Validity**

- ✓ 3000+ Mock Test Series
- ✓ Full-Test, Sectional tests, Topic Tests, eBooks
- ✓ Best Quality Questions Based on Real Exams
- ✓ 24\*7 Access on Website and Mobile app



**Enroll now**