

Parallel Row Seating Arrangement for PO Prelims Exam



Sachin Modi Sir

Guidely

Guidely Xpress Video Course

Subscribe Now to Get Unlimited Access

The Complete Course

Individual Live Course + Xpress Video Course + Yearly Mock Test Series

- ★ 1200+ Mock Tests for Bank, Insurance, Railway and SSC
- ★ 500+ Videos for Bank and Insurance exams
- ★ 350+ Hours Video Classes (Individual Live Course)
- ★ Personal Guidance in Telegram Group
- ★ Life Time Validity for Video Course
- ★ Access on Mobile & Desktop

@ ₹2249

₹12,999



Yashraj Sir



Abhijeet Sir



Rohit Sir



Amit Sir



Naren Sir

Parallel Row Seating Arrangement

Direction (1-5): Study the following information carefully and answer the questions given below:

In Delhi there is a residential society named Dwarkapuri which has Twelve blocks A, B, C, D, E, F, G, H, I, J, K and L. These blocks form two rows. Blocks on row 1 are facing west and blocks on row 2 are facing east. Blocks C, D, I, F, G and L are in row 1 and blocks A, B, E, J, K and H are in row 2. Each blocks of row 1 is exactly opposite the other block in row 2. Block I, which is at one of the ends of the row, is second to the left of block L. There are four blocks between block J and K. Block H is third to the right of B. Block J sits to the left end of the row. Block H is not opposite to either I or L. Block I is third to the left of C. Block F is not opposite to H. Block B is not adjacent to E. Block E is not opposite to I. Block G is third to the right of the one, who is opposite to E. Block A is neither opposite to G nor I.

1) Which is following statements is true about C?

- Block E is opposite to block C.
- Block G is not adjacent to block C.
- Block E is not neighbour of that block which is opposite C.
- Block C is 3rd to the right of D.
- None of these

2) Which of the following blocks are at the ends of the row?

- I, G
- C, D
- H, A

Parallel Row Seating Arrangement for PO Prelims Exam

d. K, B

e. J, F

3) Block I is related to block K in the same way as block L is related to E, based on the given arrangement. Who among the following is C related to, following the same pattern?

a. A

b. J

c. B

d. H

e. None of these

4) How many blocks are there between blocks E and K?

a. Four

b. Three

c. Two

d. One

e. None of these

5) Which block is placed opposite to block B?

a. A

b. L

c. F

d. G

e. I

Direction (6-10): Study the following information carefully and answer the questions given below:

Ten persons A, B, C, D, E, F, G, H, I and J are sitting in two parallel rows such that five members are sitting in each row. The persons sitting in row 1 faces north while persons in row 2 faces south direction. Therefore, in the given seating arrangement persons sitting in row 1 are facing the persons sitting in the row 2.

C sits in middle of the row. G sits to the immediate left of the person who faces C. F sits at the extreme end of the row. B sits third to the left of the person who faces F. Number of persons sitting between H and J is two less than the number of persons sitting between A and D. A is not an immediate neighbor of B. I sits in row 1. H does not sit at the extreme end of the row. D sits third to the left of E.

6) Who among the following sits at the extreme left end of Row 1?

a. B

b. J

c. F

d. E

e. None of these

7) Who sits 2nd to the right of B?

a. A

b. B

c. F

d. E

e. None of these

8) Who sits to the immediate right of A?

Parallel Row Seating Arrangement for PO Prelims Exam

- a. B
- b. F
- c. None
- d. G
- e. E

9) Who among the following sits opposite to I?

- a. B
- b. J
- c. A
- d. H
- e. None of these

10) Four of the following five are related to each other in some way and thus formed a group. Choose the one which does not belong to that group.

- a. A
- b. B
- c. D
- d. F
- e. J

Direction (11-15): Study the following information carefully and answer the questions given below:

Twelve persons are sitting in parallel rows. A, B, C, D, E and F sit in row 1 while P, Q, R, S, T and U sit in row 2. Persons in row 1 and row 2 face each other. Persons of row 1 face south while persons of row 2 face north.

B sits second to the right of C, who faces R. One person sits between R and T, who sits at one of the extreme ends. B does not sit at any extreme end. Q sits to the

immediate left of P. U sits opposite to E, who is not adjacent to B. F sits second to the right of A but not opposite to S.

11) Who sits opposite to T?

- a. E
- b. D
- c. B
- d. A
- e. None of these

12) Who sits to the immediate right of E?

- a. A
- b. C
- c. P
- d. R
- e. None of these

13) How many persons sit between P and T in the same row?

- a. Three
- b. Four
- c. Five
- d. One
- e. Two

14) Who sits second to the left of R?

- a. P
- b. U
- c. T

Parallel Row Seating Arrangement for PO Prelims Exam

- d. Q
- e. None of these

15) Who sits to the immediate left of U?

- a. T
- b. C
- c. A
- d. R
- e. None of these

Direction (16-20): Study the following information carefully and answer the questions given below:

8 persons sit in two parallel rows in such a way that in row 1, P, S, T and V sit facing south while Q, R, U and W face north. Row 1 persons face row 2 persons and vice versa.

W faces the person, who sits 2nd to the left of V. T sits adjacent to V. S faces R. P doesn't sit at the left end of his row. Q sits to the right of U.

16) Who faces Q?

- a. T
- b. P
- c. V
- d. Can't be determined
- e. None of these

17) Find the odd one out.

- a. T
- b. V
- c. W

d. Q

e. P

18) ___ sits to the immediate right of T and W sits to the immediate right of ____.

- a. V, U
- b. P, R
- c. V, Q
- d. S, U
- e. None of these

19) How many persons sit between U and R?

- a. Zero
- b. Either a or d.
- c. None of these.
- d. One
- e. Two

20) Four of the following five are related to each other in some way and thus formed a group. Choose the one which does not belong to that group.

- a. V
- b. W
- c. S
- d. U
- e. R

Parallel Row Seating Arrangement for PO Prelims Exam

Direction (21-25): Study the following information carefully and answer the questions given below:

Twelve persons are sitting in two parallel rows such that persons in each row are facing each other. P, Q, R, S, T and U sit in row 1 and face south while A, B, C, D, E and F sit in row 2 and face north. Distance between each adjacent person in each row is same.

Two persons are sitting between Q and U. C is sitting opposite to the one, who is sitting to the immediate left of U. Three persons are sitting between C and D. B, who is sitting opposite to S, is sitting adjacent to C. Two persons are sitting between S and P. F is not sitting opposite to P and U. A is sitting adjacent to E, who is not sitting adjacent to the person, who is sitting opposite to T. R is not sitting adjacent to Q.

21) How many persons are sitting between Q and S?

- a. 2
- b. 1
- c. 3
- d. Cannot be determined
- e. 4

22) _____ is sitting opposite to T.

- a. C
- b. F
- c. B
- d. E
- e. None of these

23) How many persons are sitting between D and E?

- a. 2

b. 3

c. 1

d. Cannot be determined

e. None of these

24) Find the odd one out.

- a. Q
- b. U
- c. D
- d. S
- e. B

25) How many persons are sitting in the right of A?

- a. 4
- b. 1
- c. 3
- d. 2
- e. Cannot be determined

Directions (26-30): Study the following information and answer the given questions.

Twelve people are sitting in two parallel rows containing six people each, in such a way that there is an equal distance between adjacent persons. In row-1, Amit, Belal, Cintu, Dinesh, Firoz, and Gaurav are seated and all of them are facing south. In row-2, Manish, Neetu, Om, Prakash, Qamar, and Rohan are seated and all of them are facing north. Therefore, in the given seating arrangement each member seated in a row faces another member of the other row.

Parallel Row Seating Arrangement for PO Prelims Exam

Prakash sits fourth to the right of Manish. Manish faces the person who sits to the immediate right of Gaurav. Two people sit between Cintu and Gaurav who faces Rohan. Three persons sit between Rohan and Om. Om faces Dinesh who is third to the left of Amit. Manish does not face Firoz. Neetu and Qamar are immediate neighbours of each other and Qamar is not an immediate neighbor of Rohan.

26) Belal is related to Amit in the same way as Firoz related to Dinesh. To whom of the following people is Qamar related, if we follow the same pattern?

- a. Neetu
- b. Manish
- c. Om
- d. Prakash
- e. Rohan

27) Which of the following is true regarding Firoz?

- a. Firoz sits second to the left of one who faces Rohan
- b. Firoz is not an immediate neighbor of Amit
- c. Firoz faces Prakash
- d. Firoz is third to the right of Dinesh
- e. Firoz faces Manish

28) How many persons are seated between Manish and Prakash?

- a. One
- b. Three
- c. More than three
- d. None

e. Two

29) Who amongst the following sits second to the right of Neetu?

- a. Who faces Dinesh
- b. Qamar
- c. Rohan
- d. Prakash
- e. The person who faces Firoz

30) Who amongst the following sit at extreme ends of the rows?

- a. Manish, Amit
- b. Dinesh, Rohan
- c. Belal, Om
- d. Firoz, Neetu
- e. Om, Gaurav

Direction (31-35): Read the given information carefully and answer the questions asked below.

Twelve people are sitting in two parallel rows. Six persons M, N, O, P, Q and R are facing south and the other six U, V, W, X, Y and Z are facing north. Each person from one row faces exactly one person from the other row but not necessarily in the same order.

P sits third to the right of N and one of them sits at the extreme end. The one who faces N sits second to the right of Y. Only one person sits between Y and V. Z does not face an immediate neighbor of O. V does not sit at the extreme end. Q sits second to the left of M. R does not face U. Immediate neighbor of V sits opposite to R. Two people sit between X and Z.

Parallel Row Seating Arrangement for PO Prelims Exam

31) Four of the following five are alike in a certain way and hence form a group. Who among the following does not belong to that group?

- a. N - V
- b. R - Z
- c. Q - X
- d. M - Y
- e. P - U

32) Which of the following statement/statements is/are true about Z?

- a. Z sits opposite to P
- b. More than one person sit between W and Z
- c. Z is an immediate neighbor of the one who faces Q
- d. Both 1) or 3)
- e. All 1), 2) and 3)

33) Who among the following sit at extreme ends?

- a. R, X
- b. P, W
- c. W, N
- d. Both 1) and 2)
- e. Both 1) and 3)

34) How many people sit between R and N?

- a. One
- b. Two
- c. Three
- d. Four

e. None

35) Who among the following faces O?

- a. W
- b. V
- c. Z
- d. X
- e. U

Direction (36-40): Study the given information carefully and answer the following questions.

Twelve people are sitting in two parallel rows containing six people each, in such a way that there is an equal distance between adjacent persons. In row-1 A, B, C, D, E and F are seated and all of them facing south. In row-2 P, Q, R, S, T and V are seated and all of them are facing north. Therefore in the given seating arrangement each member seated in a row faces another member of the other row.

D sits third to right of B. Either D or B sits at an extreme end of the line. The one who faces B sits second to right of T. Two people sit between Q and V. Neither Q nor V sits at an extreme end of the line. The immediate neighbour of Q faces the person who sits third to the left of A. C and E are immediate neighbours of each other. R sits second to the left of P. E does not face the immediate neighbour of S.

36) Four of the following five are alike in a certain way based on the given arrangement and so form a group. Which is the one that does not belong to that group?

- a. PT
- b. DF

Parallel Row Seating Arrangement for PO Prelims Exam

c. CE

d. QS

e. DE

37) Which of the following statement is true?

a. F faces P.

b. S is an immediate neighbour of T.

c. E faces the person who is immediate right of Q.

d. Three people sit between F and C.

e. V is second to left of T.

38) A is related to T in the same way as F is related to Q based on the given arrangement. To which of the following is D related to, following the same pattern?

a. S

b. Q

c. T

d. Data Inadequate

e. None of these

39) How many persons are seated between R and T?

a. One

b. Two

c. Three

d. Four

e. None

40) Who among the following sit at extreme ends of the rows?

a. BF

b. TE

c. SQ

d. RS

e. None of these

Directions (41-45): Study the following information to answer the given questions:

Twelve people are sitting in two parallel rows containing six people each, in such a way that there is an equal distance between adjacent persons. In row-1, P, Q, R, S, T and V are seated and all of them are facing south. In row-2, A, B, C, D, E and F are seated and all of them are facing North. Therefore, in the given seating arrangement each member seated in a row faces another member of the other row.

A sits third to right of D. Neither A nor D sits at extreme ends. T faces D. V does not face A and V does not sit at any of the extreme ends. V is not an immediate neighbor of T. B sits at one of the extreme ends. Only two people sit between B and E. E does not face V. Two persons sit between R and Q. R is not an immediate neighbor of T. C does not face V. P is not an immediate neighbor of R.

41) Who is second to the left of person who is facing E?

a. P

b. S

c. V

d. Q

e. None of these

42) Which of the following is true regarding F?

a. F sits second to right of V.

Parallel Row Seating Arrangement for PO Prelims Exam

- b. F is not an immediate neighbor of A.
- c. F sits third to left of D.
- d. F sits at one of the extreme ends of the line.
- e. F faces V.

43) How many persons are seated between T and S?

- a. One
- b. Two
- c. Three
- d. Four
- e. None

44) Who amongst the following faces A?

- a. R
- b. T
- c. P
- d. Q
- e. S

45) Who amongst the following sit at extreme ends of the rows?

- a. B, E
- b. S, T
- c. P, R
- d. B, F
- e. None of these

Directions (46-50): Study the following information to answer the given questions:

Twelve persons are sitting in a parallel row such that six persons sit in each row. P, Q, R, S, T and U sit in row 1 and A, B, C, D, E and F sit in row 2. Persons in row 1 face south while persons in row 2 face north. Persons in row 1 and row 2 are facing towards each other.

U sits to the immediate right of T, who does not sit at extreme end. P sits second to the right of one, who sits opposite to E. At most two persons sit to the right of E. F sits second to the left of C. Q sits opposite to F. C is not adjacent to E. R sits opposite to B, who is not adjacent to E.

46) Who sits opposite to C?

- a. U
- b. T
- c. S
- d. Q
- e. None of these

47) How many persons sit between A and D?

- a. Three
- b. Two
- c. One
- d. Four
- e. None of these

48) Who sits to the immediate right of S?

- a. U
- b. T
- c. R
- d. Q

Parallel Row Seating Arrangement for PO Prelims Exam

e. None of these

49) How many persons sit to the left of A?

- a. Three
- b. Five
- c. Four
- d. One
- e. Cannot be determined

50) Who sits to the immediate right of R?

- a. P
- b. Q
- c. T
- d. S
- e. None of these

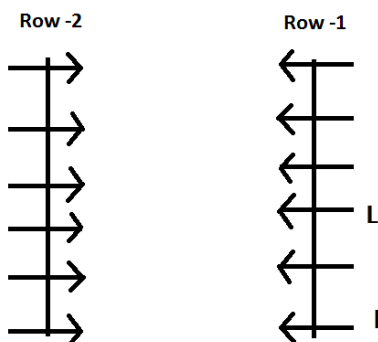
Answer with Explanation

Answers:

- 1. b
- 2. a
- 3. a
- 4. d
- 5. c

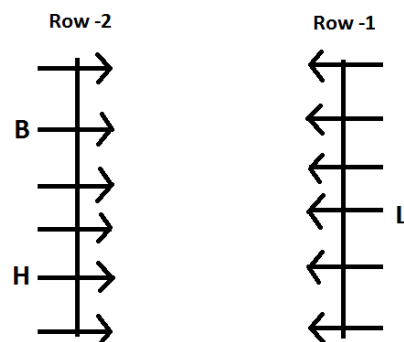
Solutions 1-5

1) Block I, which is at one of the ends of the row, is second to the left of block L.



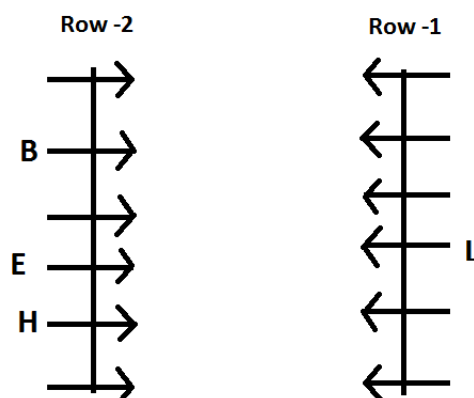
2) Block H is third to the right of B.

3) Block H is not opposite to either I or L.



4) Block B is not adjacent to E.

5) Block E is not opposite to I.

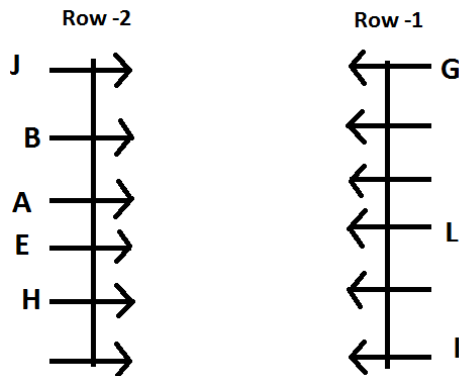


6) Block G is third to the right of the one, who is opposite to E.

7) Block A is neither opposite to G nor I.

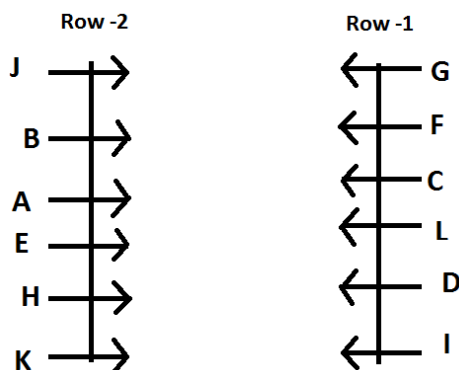
Parallel Row Seating Arrangement for PO Prelims Exam

8) Block J sits to the left end of the row.



9) Block I is third to the left of C.

10) Block F is not opposite to H.



Answers:

6. c

7. d

8. c

9. a

10. b

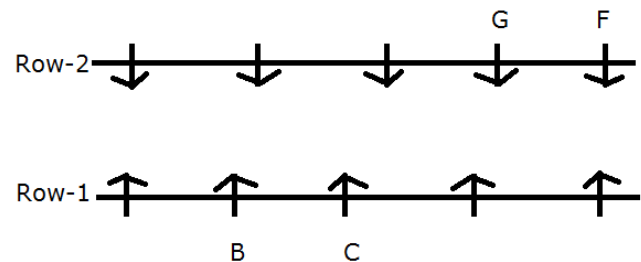
Solutions 6-10

1. C sits in middle of the row so, C sits either in row 1 or row 2.

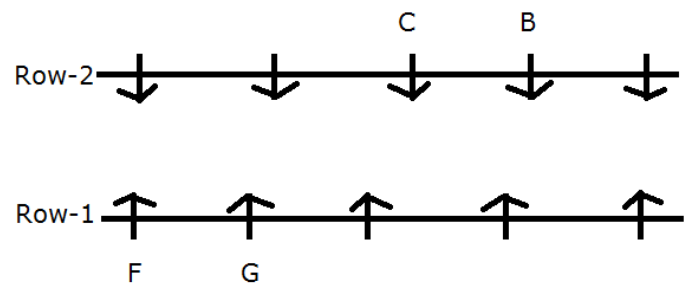
2. G sits immediate left of the person who faces C.

3. F sits at the extreme end of the row. B sits third to the left of the person who faces F.

Case I:



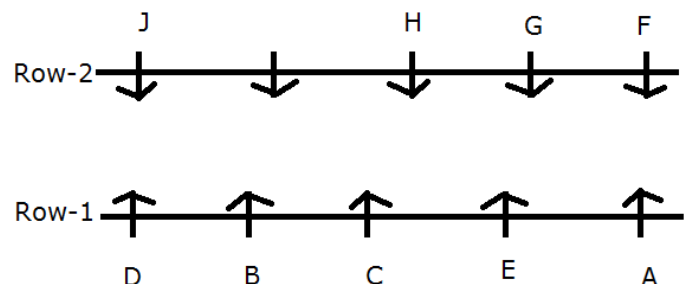
Case II:



4. Number of persons sit between H and J is two less than the number of persons sit between A and D.

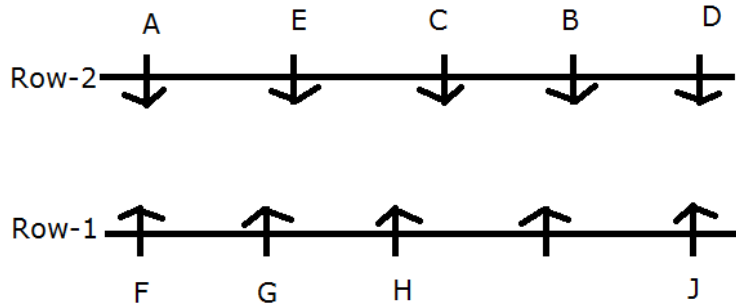
5. D sits third to the left of E which means A, D and E are sitting in the same row.

Case I:



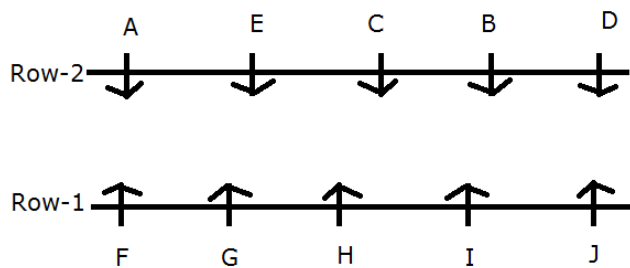
Case II:

Parallel Row Seating Arrangement for PO Prelims Exam



6. I sits in row 1 which is not possible in case I so, case I is invalid.

The final arrangement is as follows:



Answers:

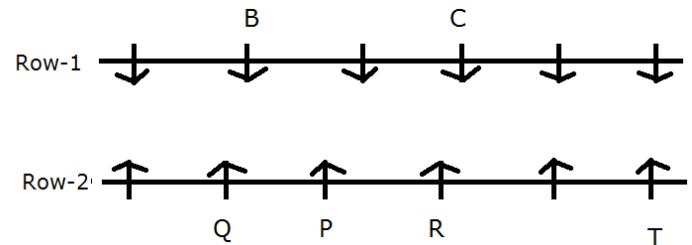
11. b
12. b
13. a
14. a
15. d

Solutions 11-15

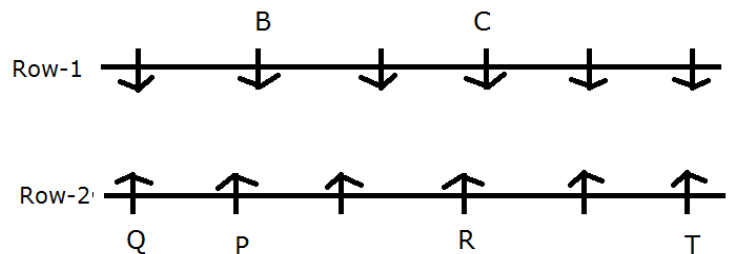
1. B sits second to the right of C, who faces R.
2. One person sits between R and T, who sits at one of the extreme ends.
3. B does not sit at any extreme end.
4. Q sits immediate left of P.

So, we have two cases,

Case-1



Case-2

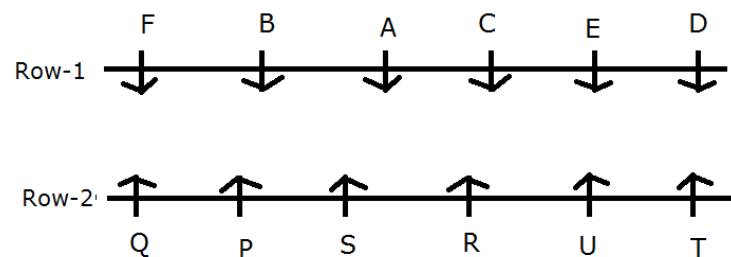


5. U sits opposite to E, who is not adjacent to B.

6. F sits second to the right of A but not opposite to S.

So, case 1 is rejected.

So, we have,



Answers:

16. a
17. b
18. c

Parallel Row Seating Arrangement for PO Prelims Exam

19. e

20. b

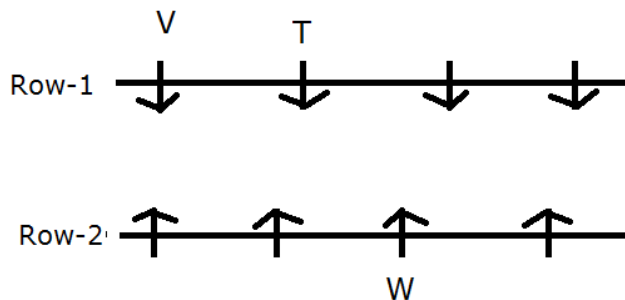
Solutions 16-20

1. W faces the person, who sits 2nd to the left of V.

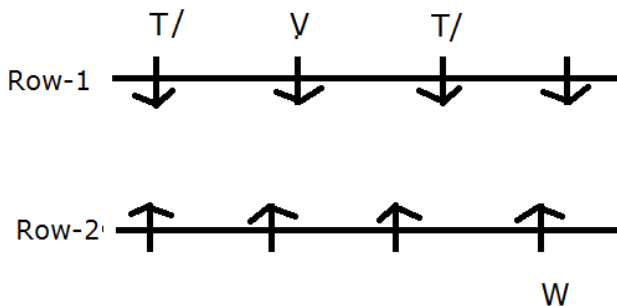
2. T sits adjacent to V

So, there will be two cases

Case-1



Case-2



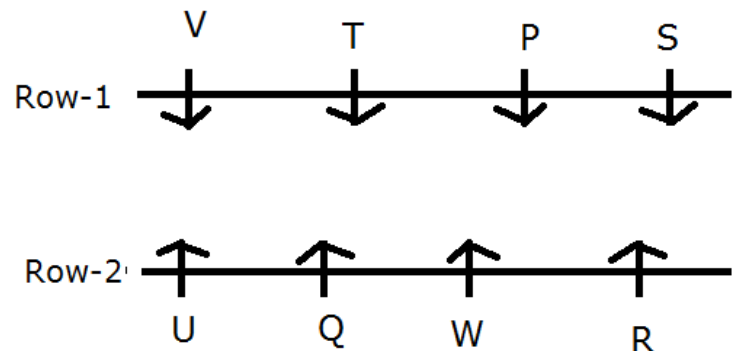
4. S faces R.

5. P doesn't sit at the left end of his row.

So case II is rejected

6. Q sits to the right of U.

The final seating arrangement is given below:



Answers:

21. e

22. b

23. a

24. b

25. c

Solutions 21-25

1. Two persons are sitting between Q and U.

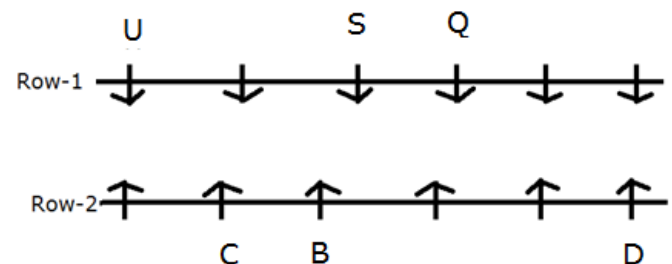
2. C is sitting opposite to the person, who is sitting to the immediate left of U.

3. Three persons are sitting between C and D.

4. B, who is sitting opposite to S, is sitting adjacent to C.

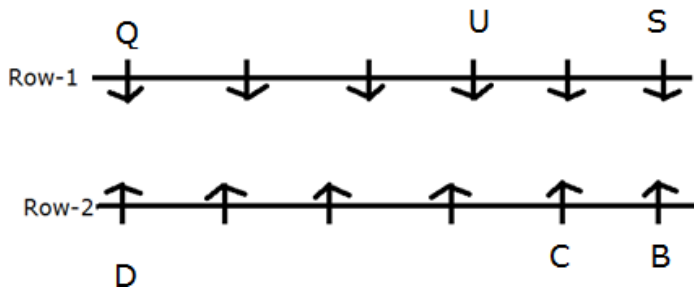
So there will be two cases

Case-1



Parallel Row Seating Arrangement for PO Prelims Exam

Case-2



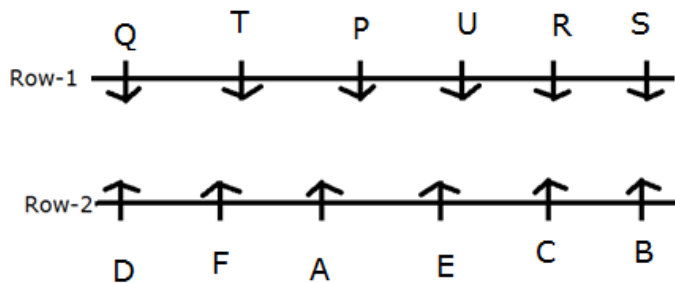
5. Two persons are sitting between S and P.

6. R is not sitting adjacent to Q.

7. A is sitting adjacent to E, who is not sitting adjacent to the person, who is sitting opposite to T.

8. F is not sitting opposite to P and U

Hence, Case-1 is eliminated.



Answers:

26. e

27. a

28. b

29. d

30. c

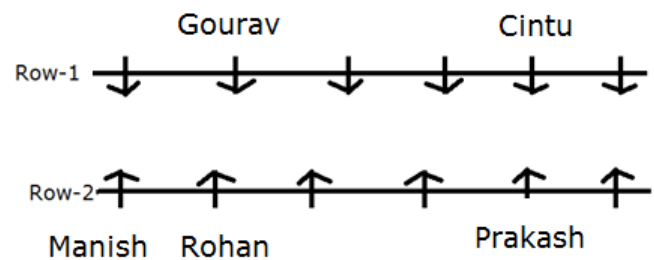
Solutions 26-30

1) Prakash sits fourth to the right of Manish.

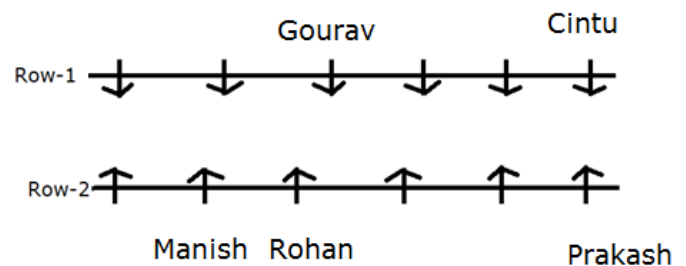
2) Manish faces the person who sits to the immediate right of Gaurav.

3) Two people sit between Cintu and Gaurav who faces Rohan.

Case-1



Case-2

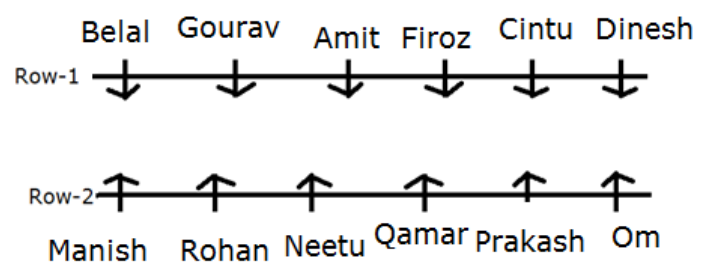


4) Three persons sit between Rohan and Om. Thus case-2 gets rejected

5) Om faces Dinesh who is third to the left of Amit.

6) Manish does not face Firoz.

7) Neetu and Qamar are immediate neighbours of each other and Qamar is not an immediate neighbor of Rohan.



Parallel Row Seating Arrangement for PO Prelims Exam

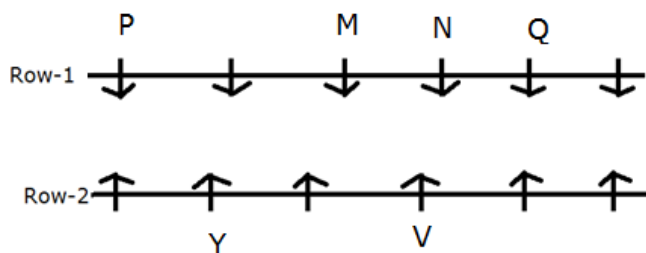
Answers:

31. a
32. d
33. e
34. d
35. e

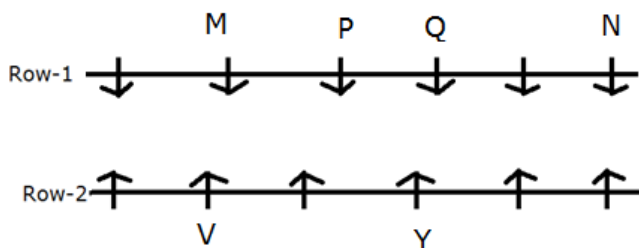
Solutions 31-35

- 1) P sits third to the right of N and one of them sits at the extreme end.
- 2) The one who faces N sits second to the right of Y.
- 3) Only one person sits between Y and V. V does not sit at the extreme end.
- 4) Q sits second to the left of M.

Case-1



Case-2

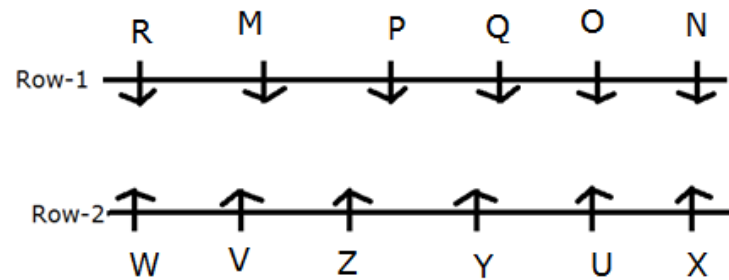


- 4) Immediate neighbor of V sits opposite to R. (This eliminates case 1)

- 5) Two people sit between X and Z.

6. Z does not face an immediate neighbor of O.

- 7) R does not face U.



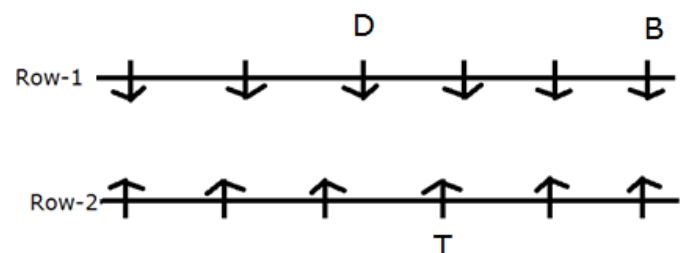
Answers:

36. e
37. e
38. a
39. b
40. d

Solutions 36-40

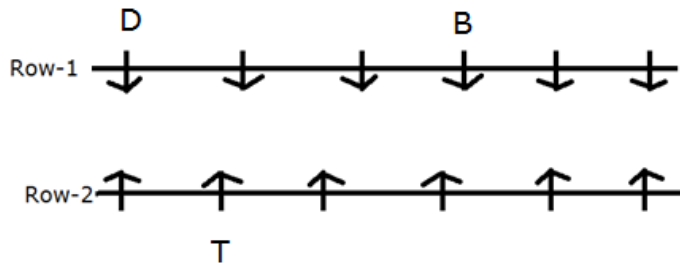
- 1) D sits third to right of B.
- 2) Either D or B sits at an extreme end of the line.
- 3) The one who faces B sits second to right of T.

Case 1

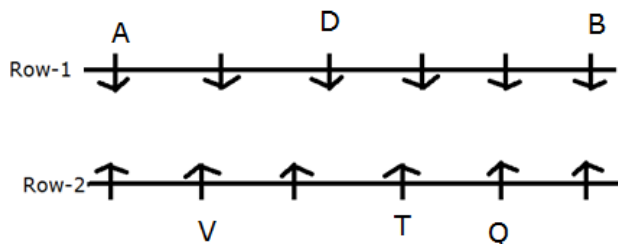


Parallel Row Seating Arrangement for PO Prelims Exam

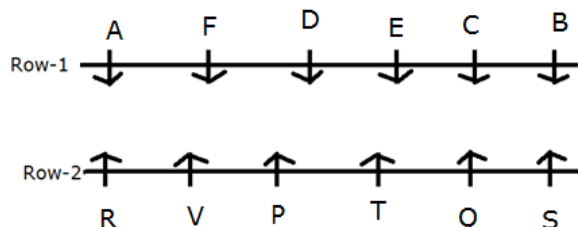
Case 2



- 4) Two people sit between Q and V.
- 5) Neither Q nor V sits at an extreme end of the line.
- 6) The immediate neighbor of Q faces the person who sits third to the left of A. Hence, Case- 2 is eliminated



- 7) C and E are immediate neighbors of each other.
- 8) R sits second to the left of P.
- 9) E does not face the immediate neighbor of S.



Answers:

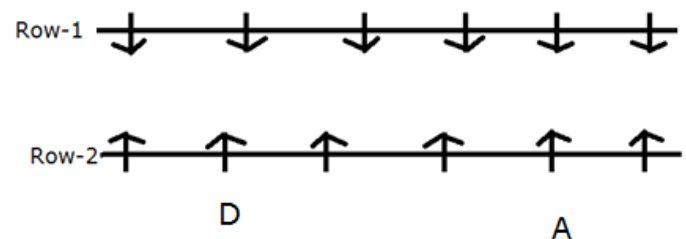
41. b
42. e
43. b

44. e

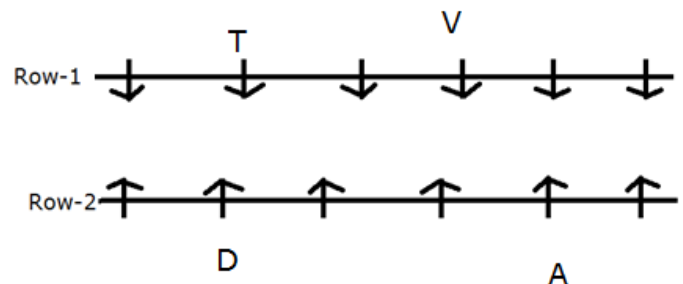
45. c

Solutions 41-45

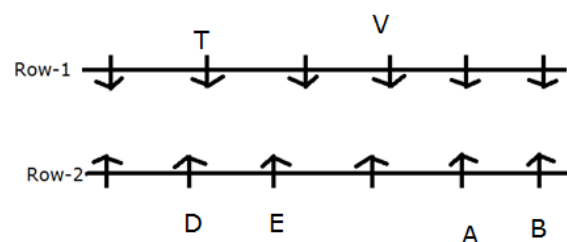
- 1) A sits third to right of D.
- 2) Neither A nor D sits at extreme ends.



- 3) T faces D.
- 4) V does not face A and V does not sit at any of the extreme ends.
- 5) V is not an immediate neighbor of T.

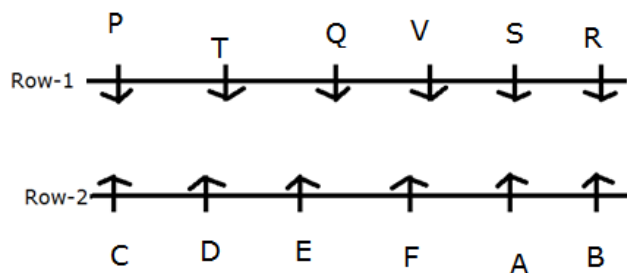


- 6) B sits at one of the extreme ends.
- 7) Only two people sit between B and E.
- 8) E does not face V.



Parallel Row Seating Arrangement for PO Prelims Exam

- 9) Two persons sit between R and Q.
- 10) R is not an immediate neighbor of T.
- 11) C does not face V.
- 12) P is not an immediate neighbor of R.



Answers:

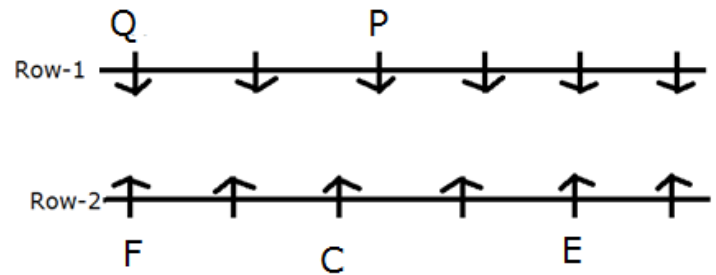
46. e
47. c
48. b
49. e
50. b

Solutions 46-50

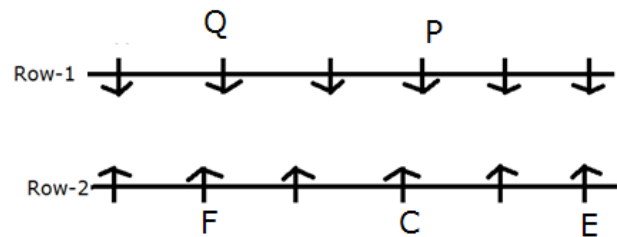
1. P sits second to the right of one, who sits opposite to E.
2. At most two persons sit to the right of E.
3. F sits second to the left of C.
4. Q sits opposite to F.
5. C is not adjacent to E.

So, we have three cases,

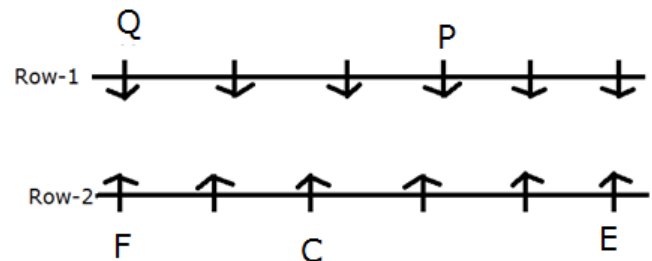
Case-1



Case-2



Case-3



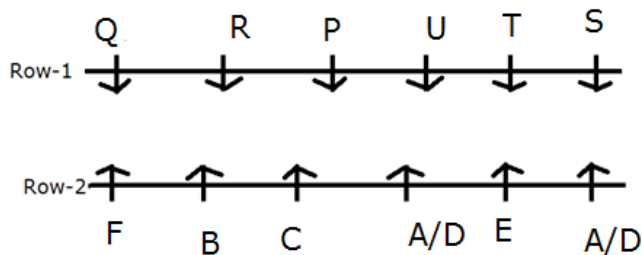
6. U sits immediate right of T, who does not sit at extreme end.

So, case 2 is rejected.

7. R sits opposite to B, who is not adjacent to E.

So, case 3 is rejected.

Parallel Row Seating Arrangement for PO Prelims Exam



[THE COMPLETE Static GK Capsule for Upcoming Exams](#)

[The COMPLETE Static Banking Awareness PDF](#)

[Check Here for Free Reasoning PDFs](#) | [Free Quantitative Aptitude Questions PDFs](#)

[Monthly Current Affairs PDF Capsule 2020](#) | [Monthly One Liner Capsule PDF](#)

[Last 6 Months Current Affairs PDF](#) | [Expected Monthly Current Affairs Questions](#)

[Join Our What's App Group & Get Instant Notification on Study Materials & PDFs](#)

[Click Here to Join Our Official Telegram Channel](#)